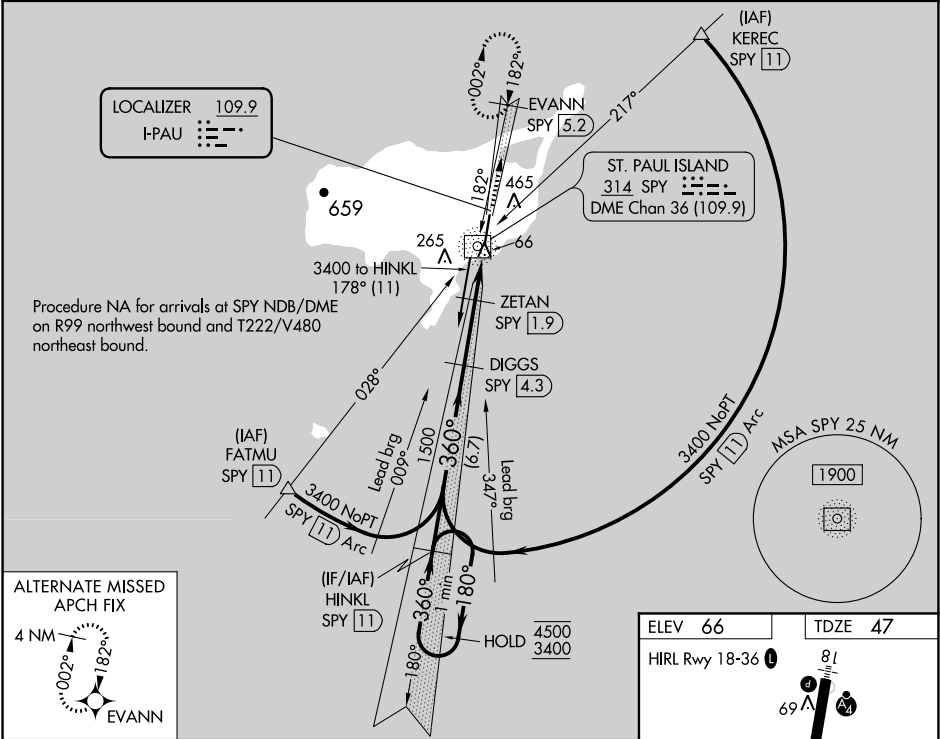


LOC I-PAU 109.9	APP CRS 360°	Rwy Idg 6500 TDZE 47 Apt Elev 66
---------------------------	------------------------	---

ILS or LOC RWY 36
ST PAUL ISLAND (SNP) (PASN)

ADF and DME required for procedure entry. DME required.	MALSF	MISSED APPROACH: Climb to 2700 on I-PAU north course (360°) to EVANN/SPY 5.2 DME and hold, continue climb-in-hold to 2700.
---	-------	--

ASOS 135.75	ANCHORAGE CENTER 119.1 339.8	CTAF 122.3 0
-----------------------	--	------------------------



One Minute Holding Pattern		HINKL SPY 11	DIGGS SPY 4.3	2700 I-PAU N crs (360°)	EVANN SPY 5.2
4500 ← 180° 3400 → 360°		360°	1480	*LOC only	
GS 3.00° TCH 50		1500	*720	*SPY 0.9	SPY 0.3
		6.7 NM	2.4 NM	1 NM	1 NM
CATEGORY	A	B	C	D	
S-ILS 36		247-¾	200 (200-¾)		
S-LOC 36		380-¾	333 (400-¾)		
CIRCLING	800-1	734 (800-1)	800-2 734 (800-2)	800-2¼ 734 (800-2¼)	

