

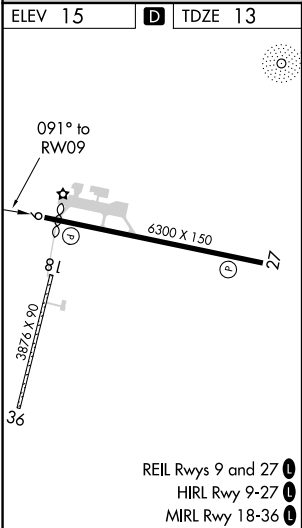
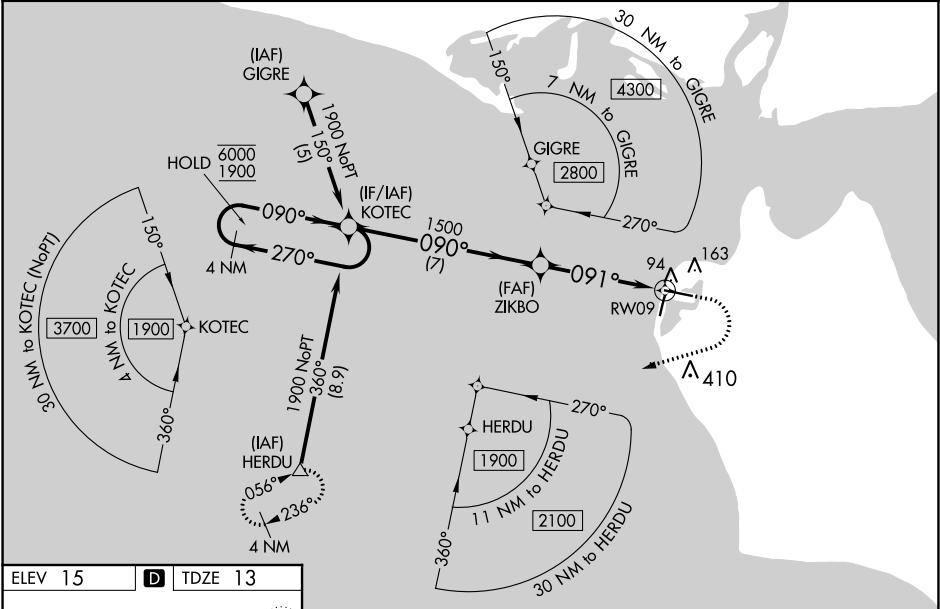
WAAS CH 57941 W09A	APP CRS 091°	Rwy ldg TDZE 13 Apt Elev 15
--	------------------------	---

RNAV (GPS) RWY 9

RALPH WIEN MEML (OTZ) (PAOT)

RNP APCH.	<p>⚠ ⚠ ⚠ -44°C</p> <p>Circling Rwy 18, 36 NA at night, Circling Rwy 27 at night, operational VGSI required, remain on or above VGSI glidepath until threshold. Rwy 9 helicopter visibility reduction below RVR 4000 NA. For uncompensated Baro-VNAV systems, LNAV/VNAV NA below -20°C or above 54°C.</p>	MISSED APPROACH: Climb to 500 then climbing right turn to 2000 direct HERDU and hold.
-----------	---	---

AFIS 135.45	ANCHORAGE CENTER 119.2 263.0	KOTZEBUE RADIO 123.6 (CTAF)
-----------------------	--	---------------------------------------



4 NM Holding Pattern		KOTEC	500		2000	HERDU
6000 ← 270°		1900 → 090°		1500		*LNAV only
GP 3.00°		TCH 42		1500		*1 NM to RWY 9
		7 NM		3.5 NM		1 NM
CATEGORY	A	B	C	D		
LPV DA	263/50		250 (300-1)			
LNAV/VNAV DA	263/50		250 (300-1)			
LNAV MDA	360/55		347 (400-1)			
C CIRCLING	520-1	505 (600-1)	720-2 705 (800-2)	720-2¼ 705 (800-2¼)		