

FAIRBANKS, ALASKA

RNAV (GPS) RWY 32

APCH CRS	Rwy Idg	14,530
320°	TDZE	548
	Arpt Elev	548

AL-1729 (USAF)

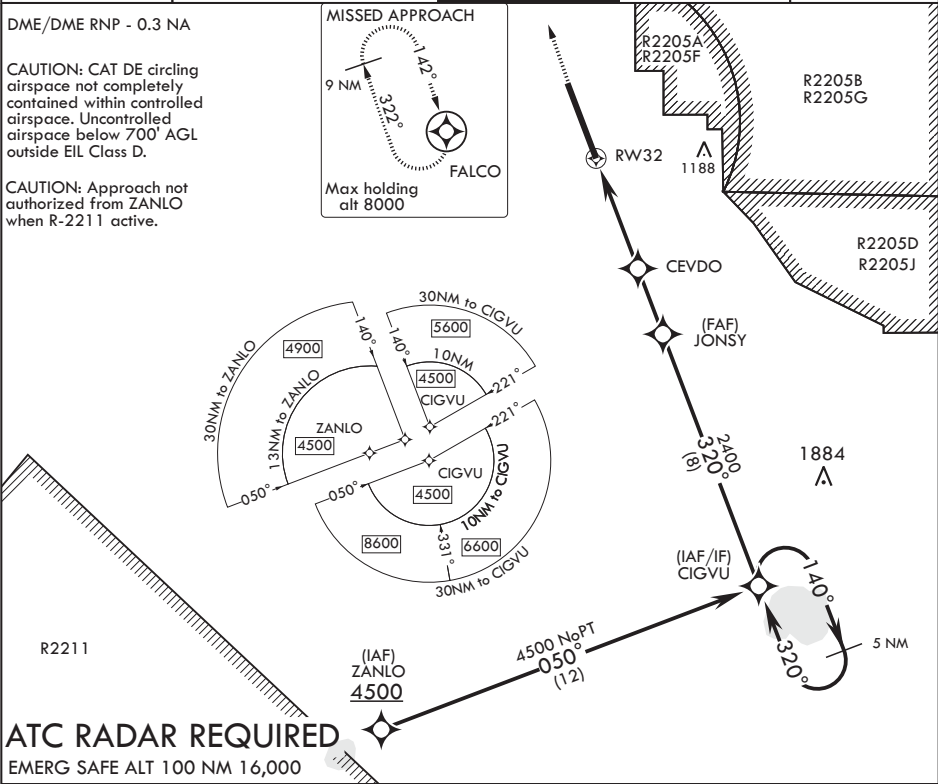
EIELSON AFB (PAEI)

**⚠** \* When ALS inop, increase CAT AB RVR to 55 and vis to 1 mile, CAT CDE RVR to 60 and vis to 1 1/8 miles.  
\*\* Circling not authorized E Rwy 14-32.

**ALSF-1**

**MISSED APPROACH:** Climb to 1000, then climbing right turn to 6000 direct FALCO and hold, continue climb-in-hold to 6000.

<b>ATIS*</b> 119.9 273.5	<b>FAIRBANKS APP CON</b> 125.35 363.2 180°-359° 127.1 251.1 360°-179°	<b>TOWER*</b> 127.2 352.05	<b>GND CON</b> 121.8 275.8	<b>CLNC DEL</b> 343.7
-----------------------------	---	-------------------------------	-------------------------------	--------------------------



**1000** **6000** **FALCO**

VGSI and descent angles not coincident (VGSI angle 2.70/TCH 44).

**CIGVU** **140°** **4500**

**JONSY** **320°** **2400**

**CEVDO** **1400**

**RW32** **1.2 NM to RW32**

**3.5 NM** **2.1 NM**

**≤ 3.04°** **TCH 49**

**ELEV 548** **TDZE 548**

Rwy lgt on N 11,314' of rwy 300' wide.  
Rwy lgt on S 3200' of rwy 150' wide.

**BCN 660** **TWR 668**

**578** **32° to RW32**

**HIRL all Rwys**

CATEGORY	A	B	C	D	E
LNAV MDA*	940/24 392 (400-1/2)	940/35 392 (400-3/4)	1100-1 1/2 552 (600-1 1/2)	1260-2 1/4 712 (800-2 1/4)	1260-2 1/2 712 (800-2 1/2)
<b>C</b> CIRCLING**	1000-1 452 (500-1)	1060-1 512 (600-1)			

FAIRBANKS, ALASKA

64°40'N - 147°06'W

EIELSON AFB (PAEI)

Amdt 4 08NOV18  
TERPS

RNAV (GPS) RWY 32

AK, 31 DEC 2020 to 25 FEB 2021

AK, 31 DEC 2020 to 25 FEB 2021