
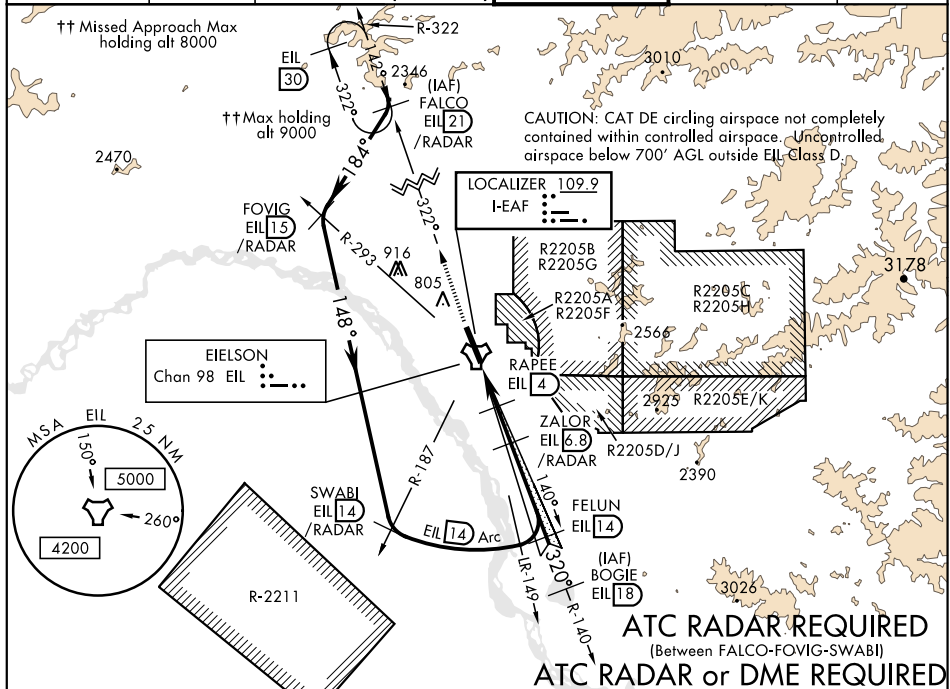


ILS or LOC/DME RWY 32

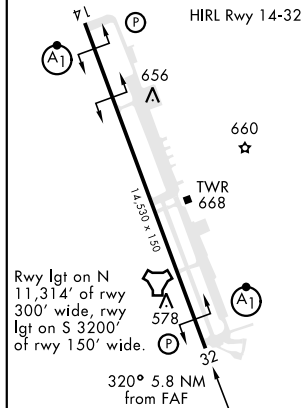
LOC I-EAF 109.9	APCH CRS 320°	Rwy ldg 14,530 TDZE 548 Arpt Elev 548	AL-1729 [USAF]	EIELSON AFB (PAEI)
▽ ** When ALS inop, increase RVR to 40 and vis to ¼ mile. ** When ALS inop, increase CAT AB RVR to 55 and vis to 1 mile; CAT CDE RVR to 60 and vis to 1½ mile. *** Circling not authorized E of Rwy 14-32.			ALSF-1 	MISSED APPROACH: Climb to 6000 on EIL TACAN R-322 to FALCO and hold. Continue climb-in-hold to 6000.
ATIS ★ 119.9 273.5	ASOS 118.525	FAIRBANKS APP CON 127.1 251.1 (360°-179°) 125.35 363.2 (180°-359°)	EIELSON TOWER ★ 127.2 352.05	GND CON 121.8 275.8 CLNC DEL 343.7



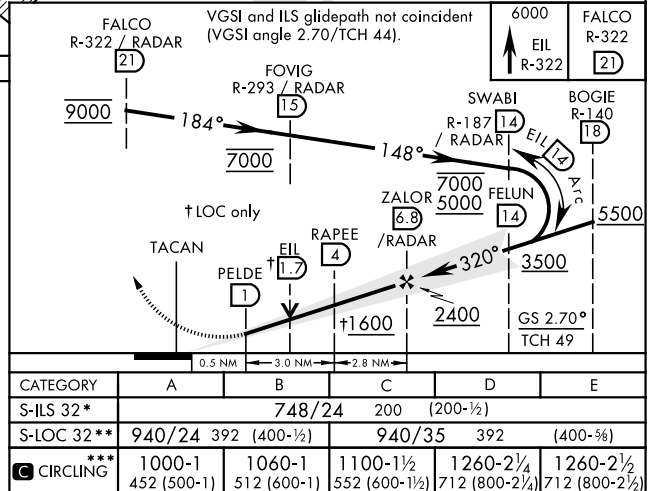
EMERG SAFE ALT 100 NM 16,000

ELEV	548		TDZE	548
------	-----	--	------	-----

HIRL Rwy 14-32



FALCO VGSI and ILS glidepath not coincident
R 222 / RADAR (VGSI angle 2.70/TCH 44).



FAIRBANKS, ALASKA

64° 40' N-147° 06' W

EIELSON AFB (PAEI)

Amdt 6 05DEC19
TERPS

ILS or LOC/DME RWY 32