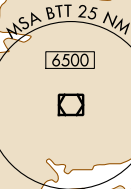
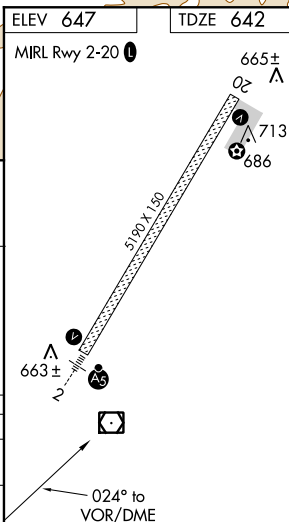


VOR RWY 2  
BETTES (BTT)(PABT)

**MISSED APPROACH:** Climbing right turn to 3500 on BTT VOR/DME R-124 to HORAG/BTT 12 DME and hold, continue climb-in-hold to 3500.

122.9 L

**C** CIRCULING



AK, 31 DEC 2020 to 25 FEB 2021