

APP CRS 348°	Rwy Idg TDZE Apt Elev	5900 25 27
------------------------	-----------------------------	---------------------------------------

RNAV (GPS) RWY 33

UNALAKLEET (UNK)(PAUN)



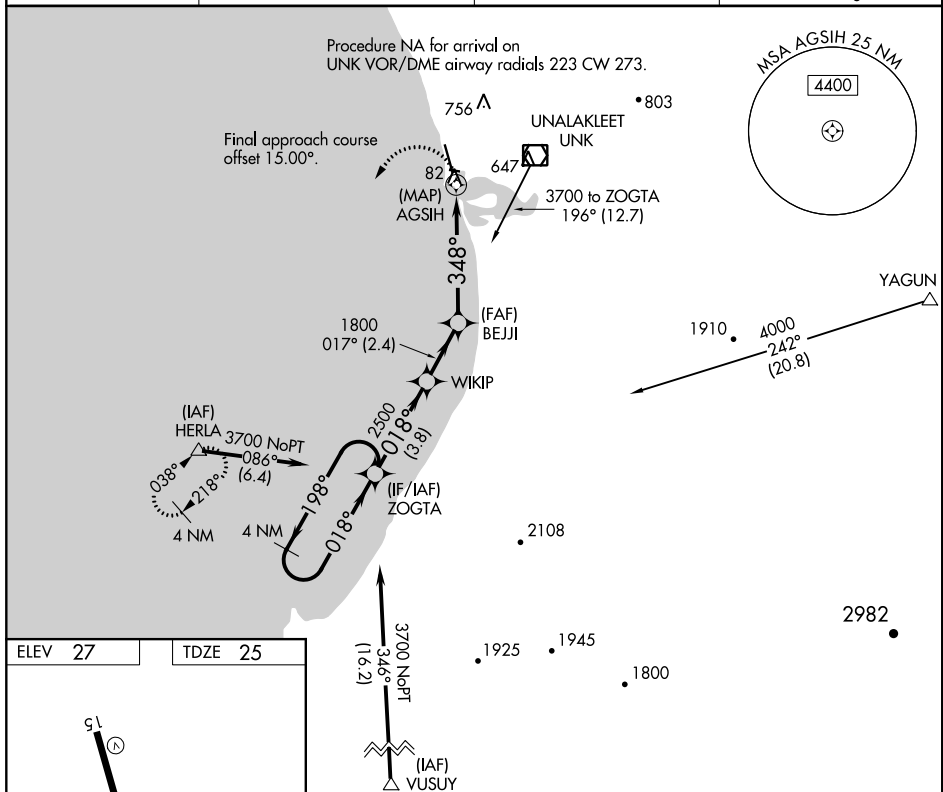
 -39°C

Circling NA east of Rwy 15-33. Circling Rwy 9 NA at night.
Rwy 33 helicopter visibility reduction below $\frac{3}{4}$ SM NA.
DME/DME RNP- 0.3 NA.

MISSED APPROACH:

Climbing left turn to 3700
direct HERLA and hold,
continue climb-in-hold to 3700.

AWOS-3P 132.25	ANCHORAGE CENTER 135.7 335.5	NOME RADIO 122.3	CTAF 123.0
--------------------------	--	----------------------------	----------------------



ELEV 27		TDZE 25
---------	--	---------

