
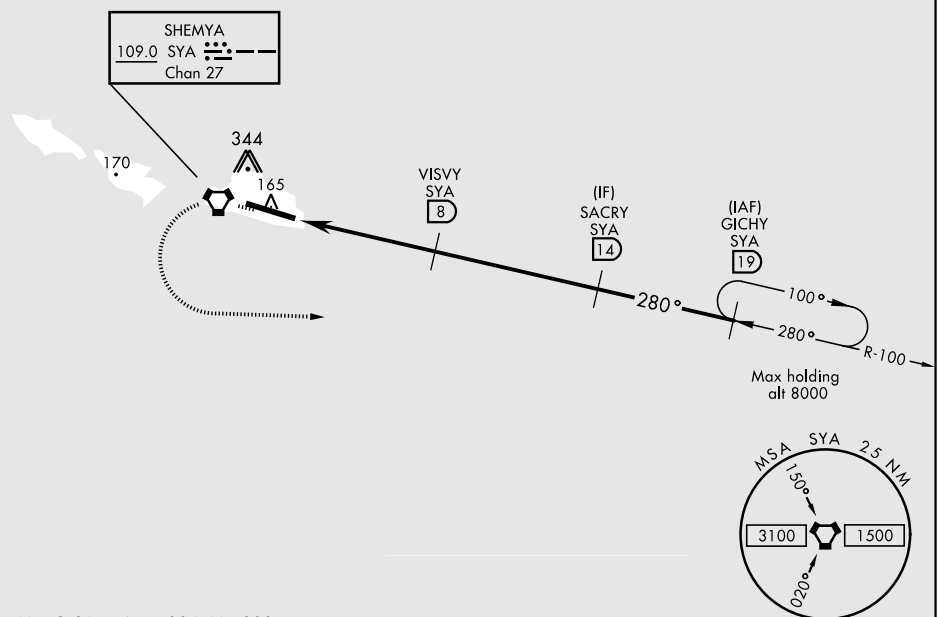


VOR/DME or TACAN RWY 28

VORTAC SYA 109.0 Chan 27		APCH CRS 280°		Rwy ldg 10,004 TDZE 88 Arpt Elev 98		AL-1246 [USAF]		EARECKSON AS (PASY)	
* When ALS inop, increase CAT AB vis to 1 mile, CAT CDE vis to 1½ miles ** Circling Not Authorized in area N of Rwy 10-28.				SALs 		MISSED APPROACH: Climbing left turn to 3000, intercept SYA R-100 direct GICHY and hold.			
ANCHORAGE CENTER 119.1 339.8				CTAF 127.2 352.05				ASOS 135.65	

CAUTION: Numerous obstructions in area N of Rwy 10-28.
Missed approach requires use of RNAV or ATC RADAR monitoring.



EMERG SAFE ALT 100 NM 5200

