

NDB/DME ADK	APP CRS	Rwy Idg	6190
530	234°	TDZE	15
Chan 87 (114.0)		Apt Elev	18

NDB/DME RWY 23

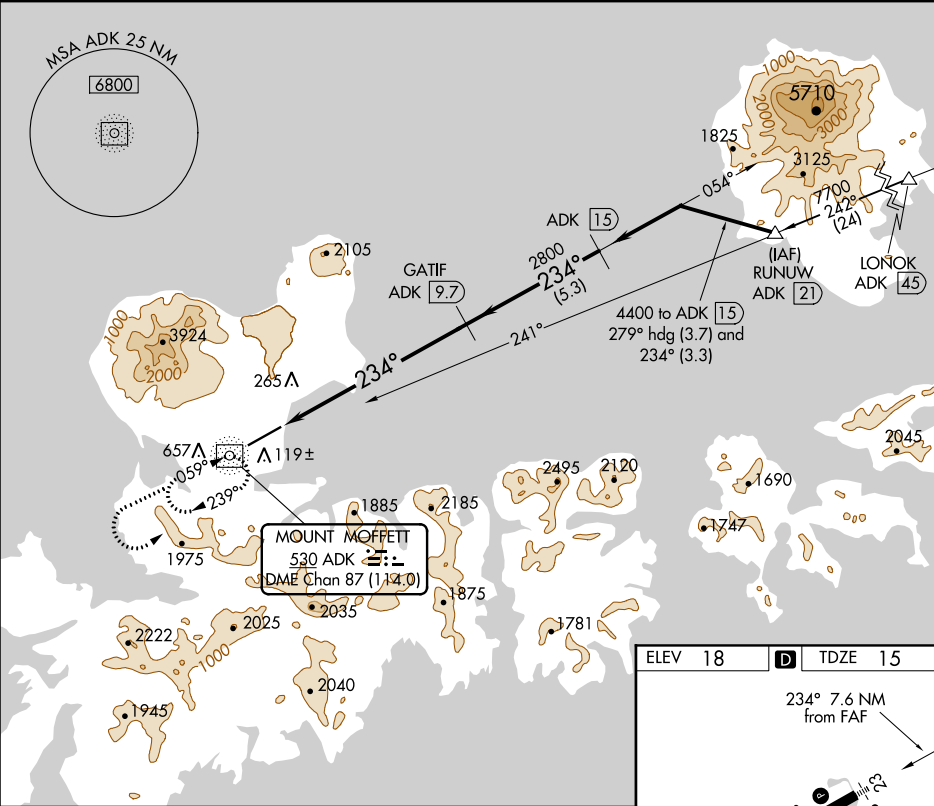
ADAK (ADK)(PADK)

Circling not authorized at night.

MALS

MISSED APPROACH: Climb to 5000 via direct ADK NDB/DME and ADK NDB/DME 234° bearing, then climbing left turn to 9000 direct ADK NDB/DME and hold.

AWOS-3P	ANCHORAGE CENTER	CTAF
134.5	126.4 254.3	122.9 0



5000

9000

ADK

VGSI and descent angles not coincident  
(VGSI Angle 3.50/TCH 53).

ADK 234°

ADK NDB/DME

ADK 2.7

ADK 15

GATIF ADK 9.7

234°

4400

2800

≤ 3.38°

TCH 43

Procedure Turn NA

CATEGORY	A	B	C	D
S-23	1600/60 1585 (1600-1¼)	1600-1½ 1585 (1600-1½)	1600-3	1585 (1600-3)
CIRCLING	1600-1¼ 1582 (1600-1¼)	1600-1½ 1582 (1600-1½)	1600-3	1582 (1600-3)

