

WAAS CH 42730 W26A	APP CRS 248°	Rwy Idg TDZE Apt Elev	4900 100 100
--	------------------------	-----------------------------	---

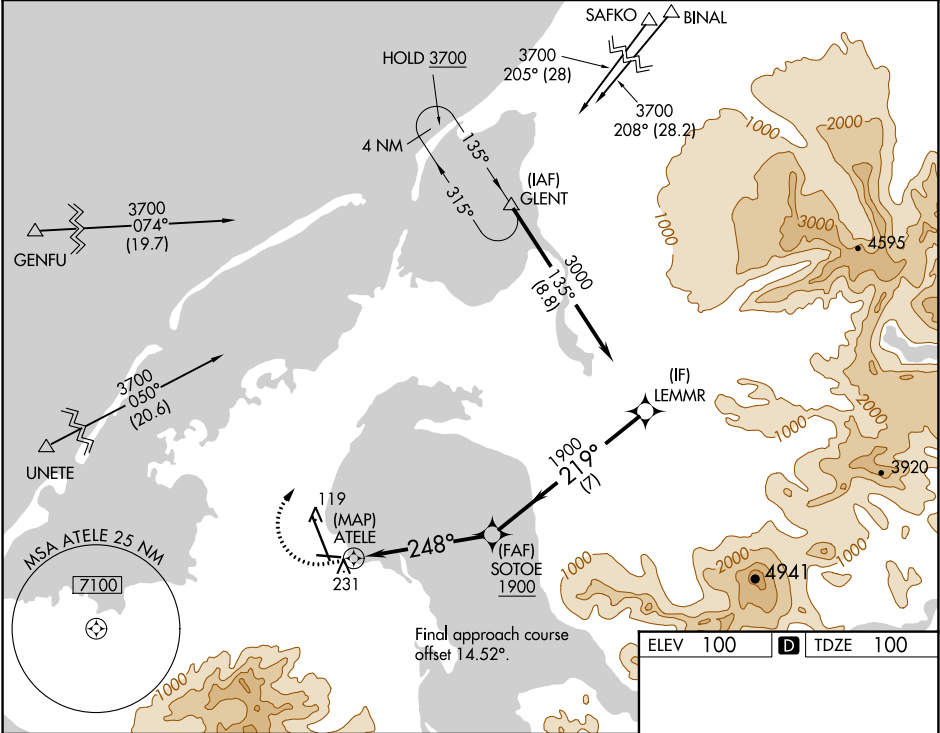
RNAV (GPS) RWY 26
COLD BAY (CDB) (PACD)

RNP APCH.

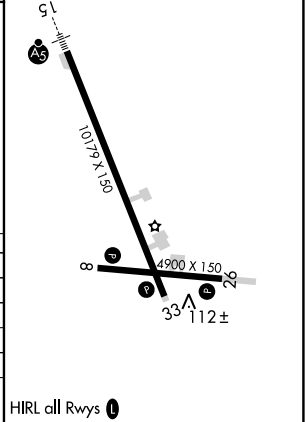
⚠ Circling NA for Cat B, C, and D southwest of Rwy 15-33.

MISSED APPROACH: Climb to 800 then climbing right turn to 3700 direct GLENT and hold, continue climb-in-hold to 3700.
Missed approach requires a minimum climb of 280 feet per NM to 1180.

ASOS 135.75	ANCHORAGE CENTER 118.5 278.3	COLD BAY RADIO 123.6 (CTAF) 0
-----------------------	--	---



800	3700	GLENT	VGSI and descent angles not coincident (VGSI Angle 3.00/TCH 36).			
↑	↗	△				
			SOTOE	LEMMR		
ATELE			1900	3000		
0.7 NM to ATELE			248°	219°		
ATELE			3.00° TCH 45			
0.5 0.7			4.3 NM	7 NM		
CATEGORY	A	B	C	D		
LP MDA #	500-1	400 (400-1)	500-1 $\frac{1}{8}$	400 (400-1 $\frac{1}{8}$)		
LP MDA	660-1	560 (600-1)	660-1 $\frac{5}{8}$	560 (600-1 $\frac{5}{8}$)		
LNAV MDA #	500-1	400 (400-1)	500-1 $\frac{1}{8}$	400 (400-1 $\frac{1}{8}$)		
LNAV MDA	700-1	600 (600-1)	700-1 $\frac{3}{4}$	600 (600-1 $\frac{3}{4}$)		
CIRCLING	700-1	600 (600-1)	700-1 $\frac{3}{4}$	860-2 $\frac{1}{2}$		
			600 (600-1 $\frac{3}{4}$)	760 (800-2 $\frac{1}{2}$)		



AK, 31 DEC 2020 to 25 FEB 2021

AK, 31 DEC 2020 to 25 FEB 2021