

COLD BAY, ALASKA

## HI-VOR/DME or TACAN RWY 15

VORTAC CDB <b>112.6</b> Chan <b>73</b>	APCH CRS <b>141°</b>	Rwy Idg <b>10,179</b> THRE <b>73</b> Arpt Elev <b>100</b>
--	-------------------------	---

JAL-1241 [USAF]

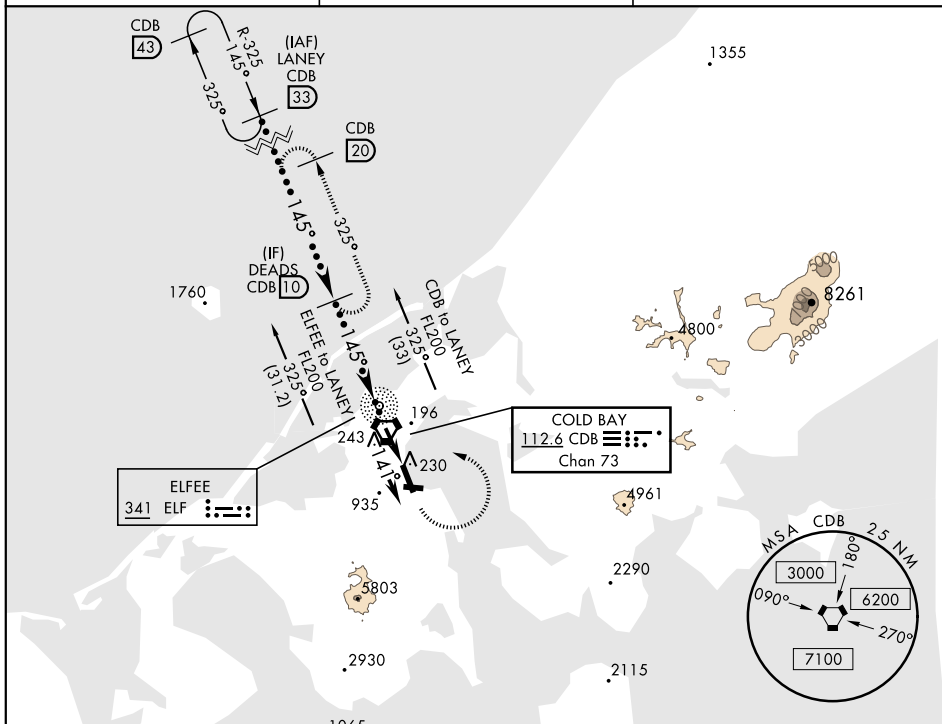
COLD BAY (CDB) (PACD)

- T** \* When ALS inop, increase vis to 1 $\frac{3}{8}$  miles.  
\*\* Circling not authorized SW of Rwy 15-33.

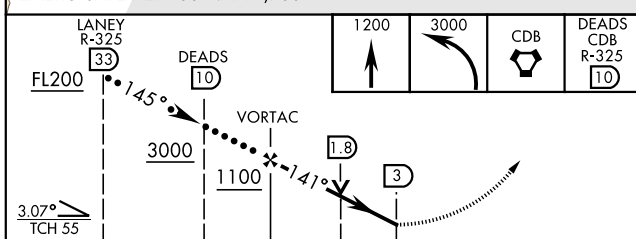



**MISSED APPROACH:** Climb to 1200, then climbing left turn to 3000 direct CDB VORTAC, then on CDB R-325 to DEADS/CDB 10 DME and hold.

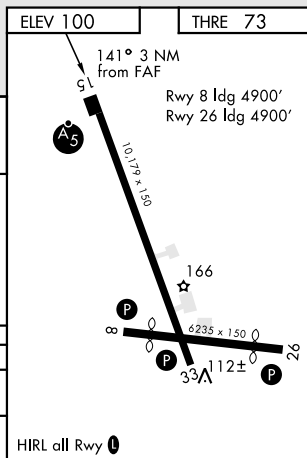
ANCHORAGE CENTER <b>118.5 278.3</b>	COLD BAY RADIO <b>123.6 (CTAF) 0</b>	ASOS <b>135.75</b>
--	---	-----------------------



EMERG SAFE ALT 100 NM 11,700



				
CATEGORY	C	D	E	
S-15 *	520/45		447	(500-7%)
CIRCLING **	560-1½ 458 (500-1½)	660-2 558 (600-2)	820-2½ 718 (800-2½)	



COLD BAY, ALASKA

55°12'N-162°44'W

COLD BAY (CDB) (PACD)

Amdt 4 15NOV12

## HI-VOR/DME or TACAN RWY 15