

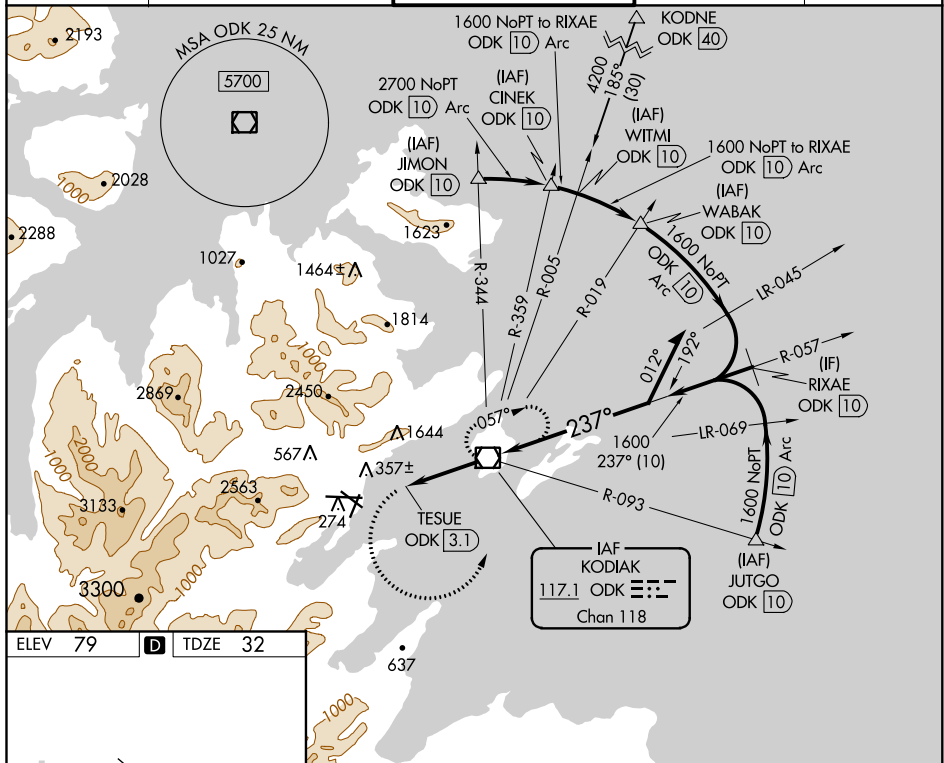
VOR/DME ODK <u>117.1</u> Chan 118	APP CRS 237°	Rwy Idg 7534 TDZE 32 Apt Elev 79
--	------------------------	---

VOR RWY 26
KODIAK (ADQ)(PADQ)

T Circling NA north of Rwy 8-26 and west of Rwy 1-19.
A Circling Rwy 1 NA at night. Circling NA to Rws 8, 11 and 19.
 Rapidly rising terrain north, west, and south of airport.

MISSED APPROACH: Climbing left turn to 3700 on heading 079° then left turn direct ODK VOR/DME and hold.

ATIS 134.45	ANCHORAGE CENTER 125.1 281.4	KODIAK TOWER * 119.8 (CTAF) 0 239.0	GND CON 121.9	UNICOM 122.8
-----------------------	--	---	-------------------------	------------------------

[illegible]

KODIAK, ALASKA
Amdt 3A 20JUN19

57°45'N-152°30'W

KODIAK (ADQ)(PADQ)
VOR RWY 26