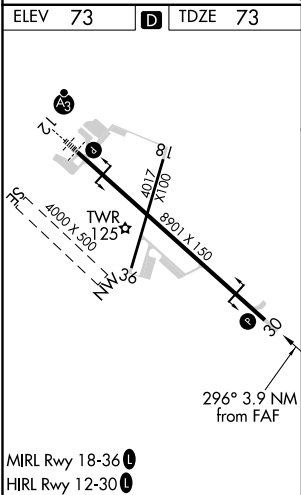
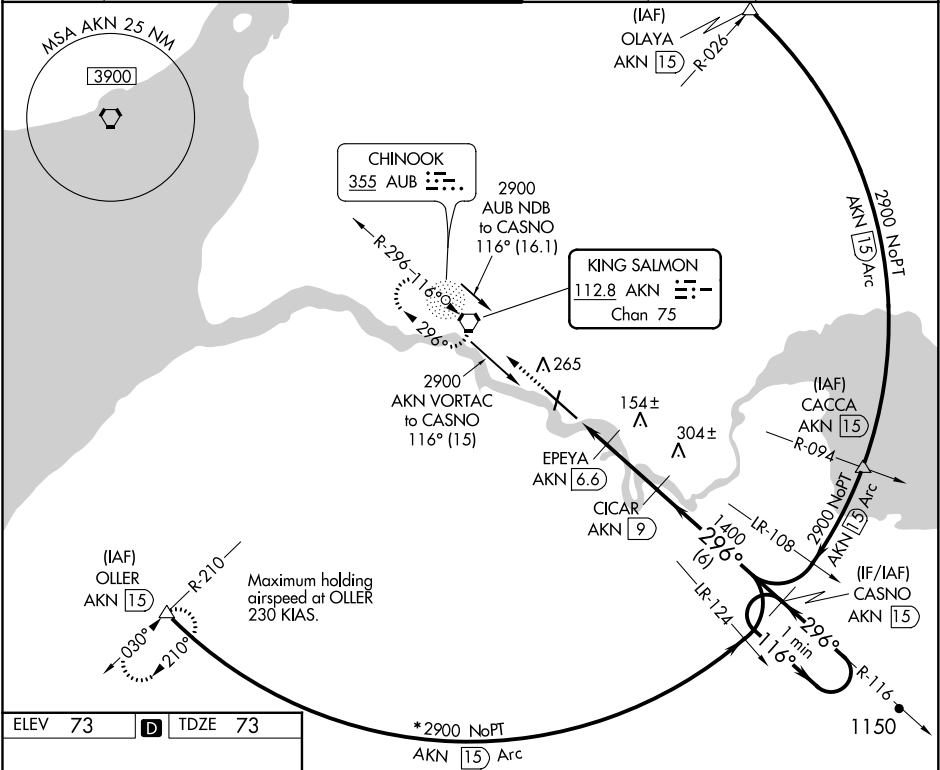


VORTAC AKN 112.8 Chan 75	APP CRS 296°	Rwy Idg TDZE 73 Apt Elev 73
--	------------------------	---

VOR/DME or TACAN RWY 30
KING SALMON (AKN)(PAKN)

-31°C Visibility reduction by helicopters NA.	MISSED APPROACH: Climb to 3000 direct AKN VORTAC and hold, continue climb-in-hold to 3000. (TACAN AIRCRAFT: Climb to 500, then climbing left turn to 3000 via heading 222° and AKN VORTAC R-210 to OLLER/AKN 15 DME and hold SW, right turn, 030° inbound).			
ATIS 128.8	ANCHORAGE CENTER 124.8 354.0	KING SALMON TOWER ★ 118.3 279.5	GND CON 121.9	UNICOM 122.95
			CTAF 121.9 0 352.05	



ELEV 73 D TDZE 73		*2900 NoPT AKN 15 Arc		*Terminal Route OLLER (IAF) to CASNO via 15 DME Arc NA for TACAN only equipped aircraft.	
3000 AKN		CASNO AKN 15		One Minute Holding Pattern	
EPEYA AKN 6.6		CICAR AKN 9		116° 2900	
AKN 5.1		TCH 45		1400	
1.5 NM		2.4 NM		6 NM	
CATEGORY	A	B	C	D	E
S-30	420-1	347 (400-1)		420-1¼	347 (400-1¼)
CIRCLING	580-1	507 (600-1)	580-1½ 507 (600-1½)	640-2 567 (600-2)	720-2¼ 647 (700-2¼)

AK, 31 DEC 2020 to 25 FEB 2021

AK, 31 DEC 2020 to 25 FEB 2021