

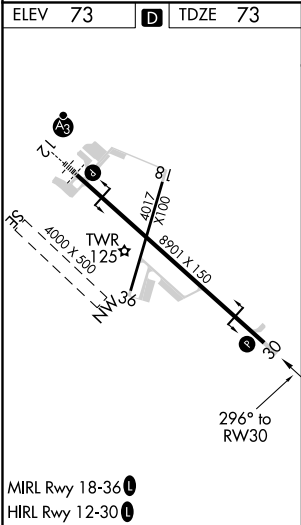
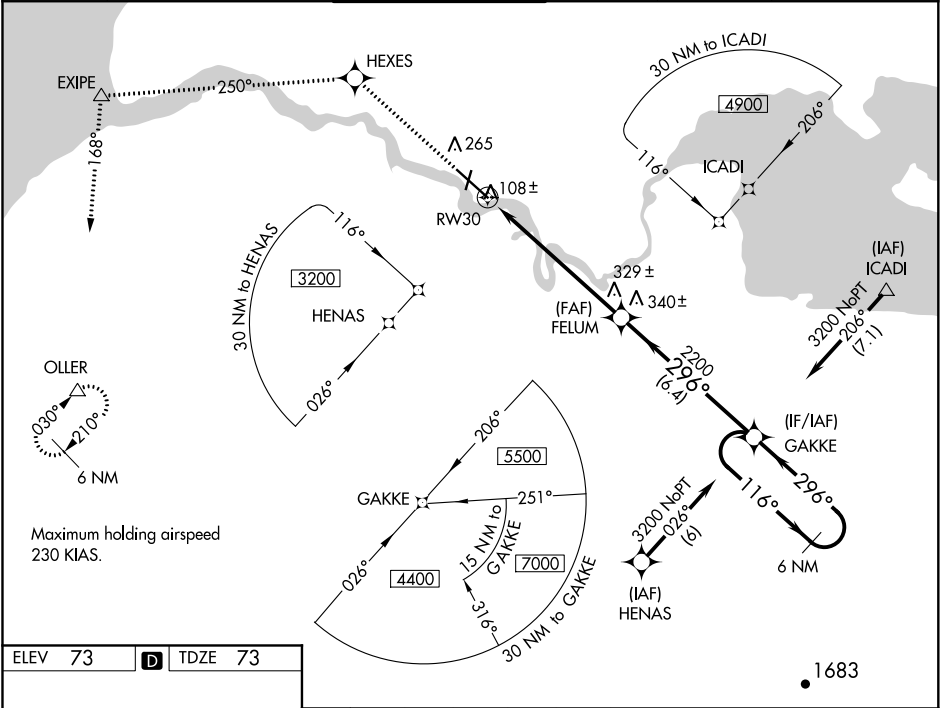
WAAS CH 77908 W30A	APP CRS 296°	Rwy Idg TDZE 73 Apt Elev 73
--	------------------------	---

RNAV (GPS) RWY 30

KING SALMON (AKN)(PAKN)

<div><div><div></div><div></div></div><div><div></div><div></div></div></div> <div><div>For uncompensated Baro-VNAV systems, LNAV/VNAV NA below -25°C (-13°F) or above 49°C (120°F). DME/DME RNP-0.3 NA. Visibility reduction by helicopters NA.</div></div>	MISSED APPROACH: Climb to 3000 direct HEXES and via 250° track to EXIPE and via 168° track to OLLER and hold.
--	---

ATIS 128.8	ANCHORAGE CENTER 124.8 354.0	KING SALMON TOWER* 118.3 279.5	GND CON 121.9	UNICOM 122.95	CTAF 121.9 352.05
----------------------	--	--	-------------------------	-------------------------	-----------------------------



3000	HEXES	250° tr	EXIPE △	168° tr	OLLER △						
						GP 3.00° TCH 45°					
CATEGORY		A		B		C		D		E	
LPV	DA	323-1 250 (300-1)									
LNAV/ VNAV	DA	358-1 285 (300-1)									
LNAV	MDA	600-1 527 (600-1)			600-1½ 527 (600-1½)			600-1¾ 527 (600-1¾)			
CIRCLING		600-1 527 (600-1)			600-1½ 527 (600-1½)			640-2 567 (600-2)		720-2¼ 647 (700-2¼)	