

WAAS CH 72608 W12A	APP CRS 116°	Rwy Idg 8501 TDZE 62 Apt Elev 73
--	------------------------	---

RNAV (GPS) RWY 12

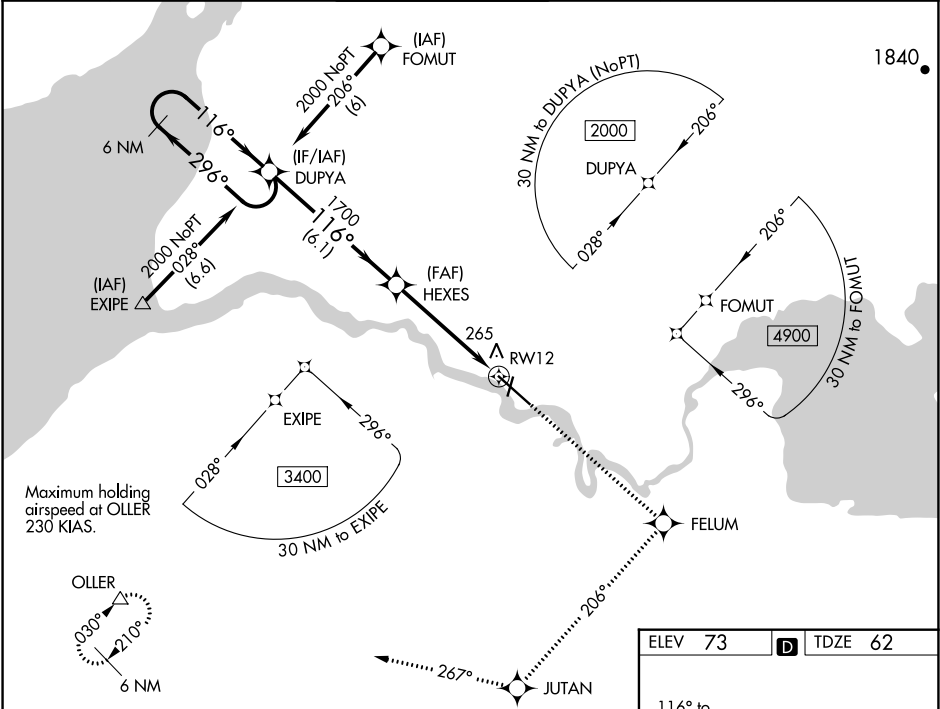
KING SALMON (AKN)(PAKN)

For uncompensated Baro-VNAV systems, LNAV/VNAV NA below -25°C (-13°F) or above 48°C (118°F). DME/DME RNP -0.3 NA. For inoperative ALSF increase LPV Cat E visibility to ¾ mile, LNAV/VNAV Cat E visibility to 1¼ mile, LNAV Cat E visibility to 1½ mile.

SSALR

MISSED APPROACH: Climb to 3000 direct FELUM and via 206° track to JUTAN and via 267° track to OLLER and hold.

ATIS 128.8	ANCHORAGE CENTER 124.8 354.0	KING SALMON TOWER* 118.3 279.5	GND CON 121.9	UNICOM 122.95	CTAF 121.9 352.05
----------------------	--	--	-------------------------	-------------------------	-----------------------------



VGSI and RNAV glidepath not coincident (VGSI Angle 3.00/TCH 66).				
6 NM Holding Pattern				
2000 ← 296° 116° → 1700				
GP 3.00° TCH 55				
6.1 NM 3.7 NM 1.2 NM				
CATEGORY	A	B	C	D
LPV DA	317-½ 255 (300-½)			
LNAV/VNAV DA	524-1 462 (500-1)			524-1¼ 462 (500-1¼)
LNAV MDA	520-½ 458 (500-½)	520-¾ 458 (500-¾)	520-1 458 (500-1)	
CIRCLING	580-1 507 (600-1)	580-1½ 507 (600-1½)	640-2 567 (600-2)	720-2¼ 647 (700-2¼)

