




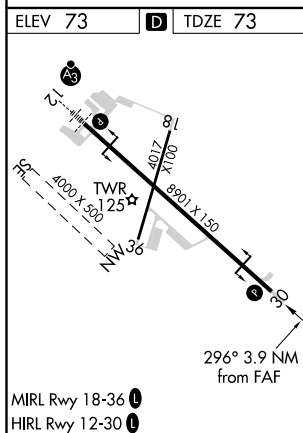
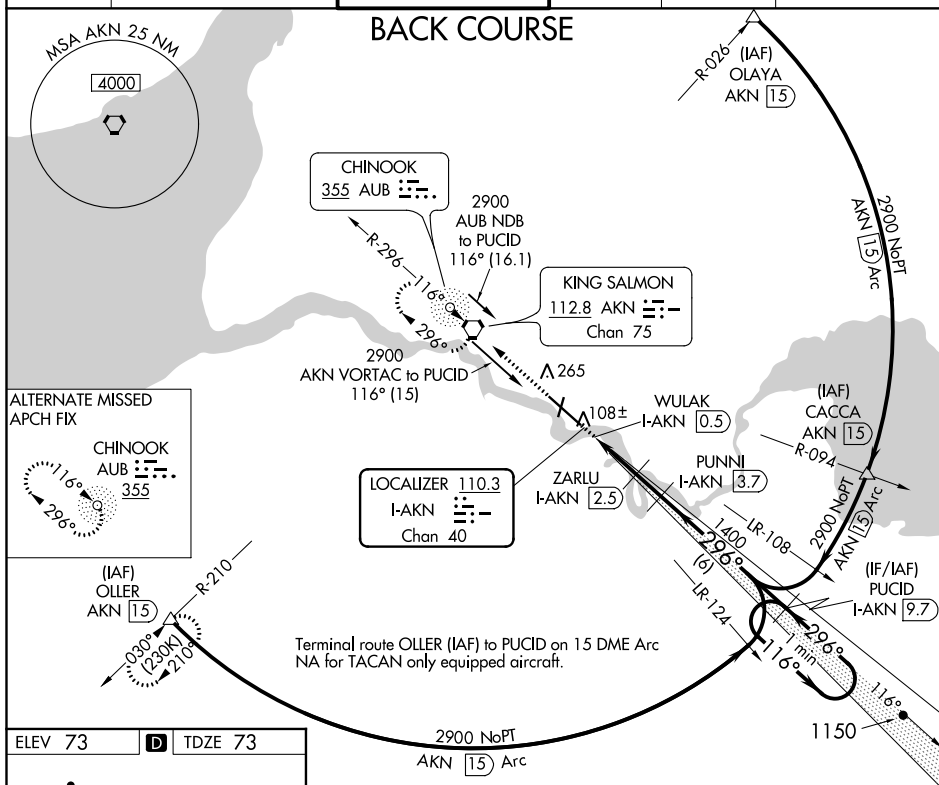
LOC/DME I-AKN <u>110.3</u> Chan 40	APP CRS 296°	Rwy Idg 8501 TDZE 73 Apt Elev 73
--	------------------------	---

LOC/DME BC RWY 30
KING SALMON (AKN)(PAKN)

	When VGSi inop, Straight-in/Circling
	Rwy 30 procedure NA at night.
 -31°C	Visibility reduction by helicopters NA.

MISSED APPROACH: Climb to 3000 direct AKN VORTAC and hold, continue climb-in-hold to 3000. (TACAN AIRCRAFT climb to 500 then climbing left turn to 3000 on heading 230° and on AKN VORTAC R-210 to OLLER/15 DME and hold SW, right turn, 030° inbound).

ATIS 128.8	ANCHORAGE CENTER 124.8 354.0	KING SALMON TOWER★ 118.3 279.5	GND CON 121.9	UNICOM 122.95	CTAF 121.90 352.05
---------------	---------------------------------	-----------------------------------	------------------	------------------	-----------------------



3000 ↑	AKN 	Use I-AKN DME when on the localizer course.					
<p>One Minute Holding Pattern</p> <p>Disregard GS indications.</p>							
CATEGORY	A	B	C	D	E		
S-30	360-1 287 (300-1)						
CIRCLING	580-1 507 (600-1)	580-1½ 507 (600-1½)	640-2 567 (600-2)	880-2¾ 807 (900-2¾)			