

HOMER, ALASKA

AL-1236 (FAA)

19227

WAAS CH 82402 W22A	APP CRS 218°	Rwy Idg 6701 TDZE 84 Apt Elev 84
--	------------------------	---

RNAV (GPS) Z RWY 22
HOMER (HOM) (PAHO)

RNP APCH.

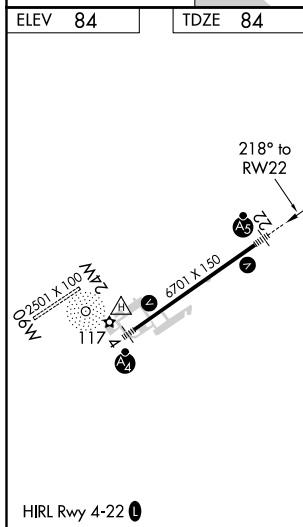
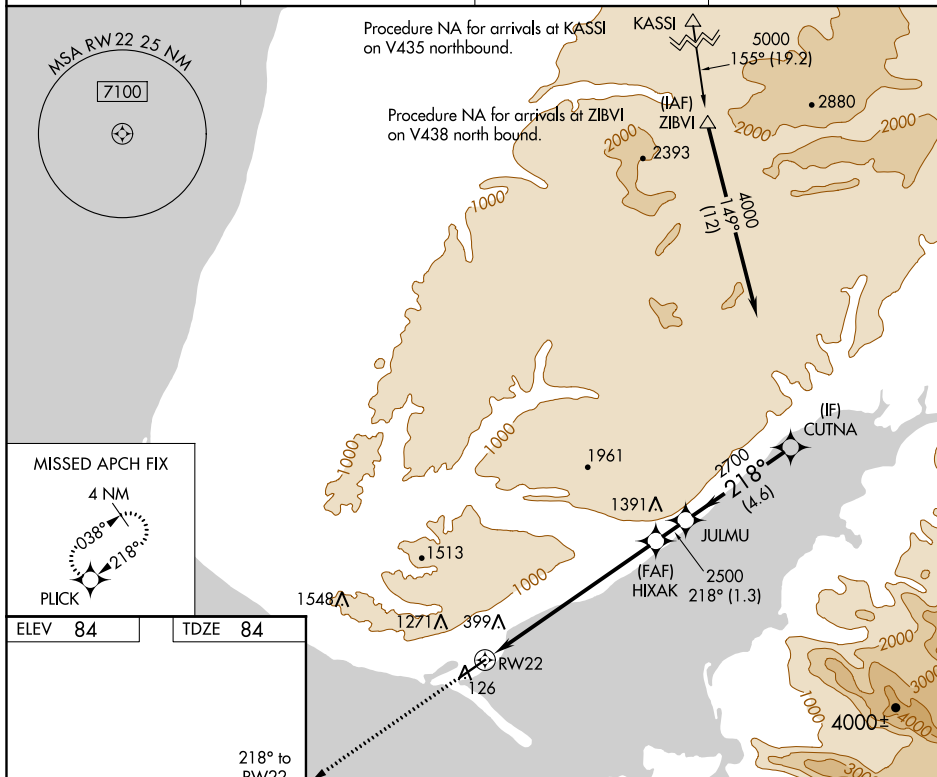
V Helicopter visibility reduction below $\frac{3}{4}$ SM NA. Inop table does not apply to LPV minimums. Baro-VNAV NA. When local altimeter setting not received, procedure NA. For inop ALS increase LNAV/VNAV all Cats visibility to 1 $\frac{1}{2}$ SM.

MALSR



MISSED APPROACH: Climb to 2600 direct PLICK and hold.

AFIS 135.65	ANCHORAGE CENTER 125.9 270.3	HOMER RADIO 123.6 (CTAF) 0	UNICOM 122.7 123.0 123.05
-----------------------	--	--------------------------------------	-------------------------------------



HOMER, ALASKA
Amdt 1D 20JUN19

59°39'N-151°29'W

HOMER (HOM) (PAHO)
RNAV (GPS) Z RWY 22

AK, 31 DEC 2020 to 25 FEB 2021

AK, 31 DEC 2020 to 25 FEB 2021