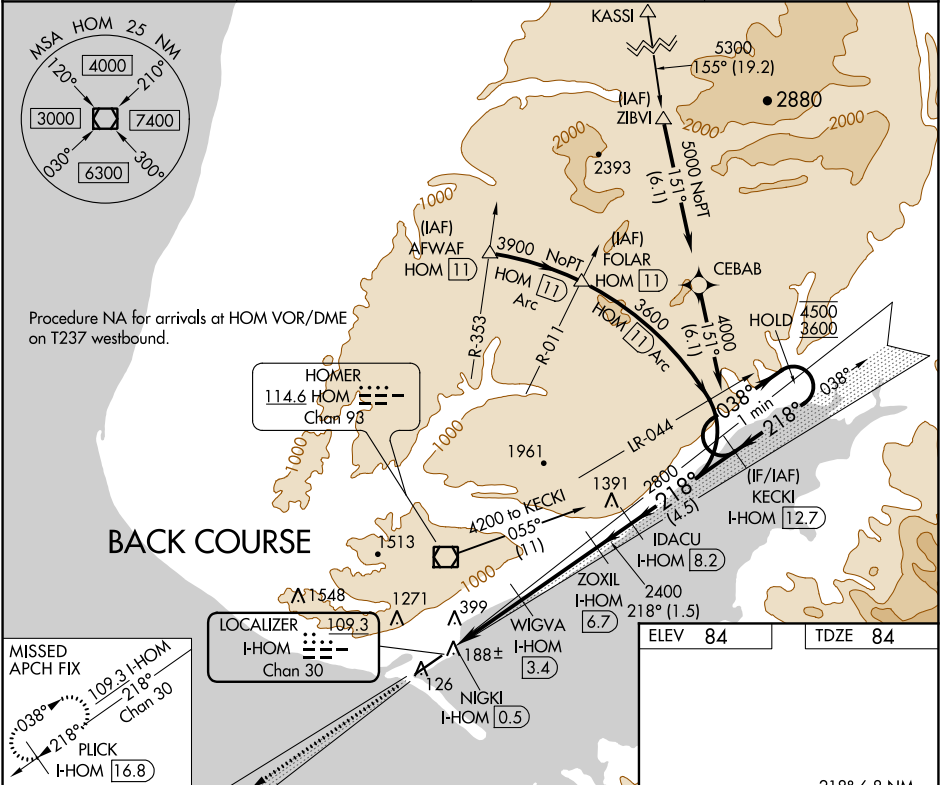


LOC/DME I-HOM 109.3 Chan 30	APP CRS 218°	Rwy Idg TDZE 84 Apt Elev 84
---	------------------------	---

LOC BC RWY 22
HOMER (HOM) (PAHO)

DME required. From KASSI: RNAV 1-GPS required.	MALSR 	MISSED APPROACH: Climb to 2600 on I-HOM localizer SW course 218° to PUCK/16.8 DME and hold.
Inop table does not apply. Rwy 22 helicopter visibility reduction below 3/4 SM NA. Circling NA northwest of Rwy 4-22. Circling NA to waterways 6W and 24W.		

AFIS 135.65	ANCHORAGE CENTER 125.9 270.3	HOMER RADIO 123.6 (CTAF) 0	UNICOM 122.7 123.0 123.05
-----------------------	--	--------------------------------------	-------------------------------------



AK, 31 DEC 2020 to 25 FEB 2021

AK, 31 DEC 2020 to 25 FEB 2021