

APP CRS	11050
020°	
TDZE	439
Apt Elev	439

RNAV (RNP) Z RWY 2L
FAIRBANKS INTL (FAI) (PAFA)

▽ -32°C

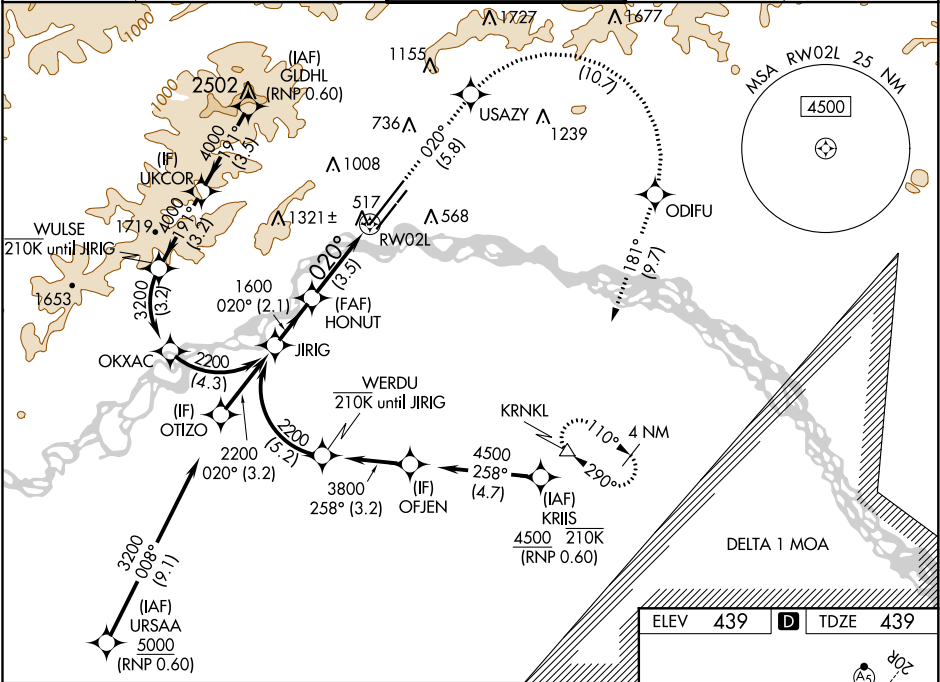
For uncompensated Baro-VNAV systems, procedure NA below -18°C (0°F) or above 54°C (130°F).
RF and GPS required.
For inop ALS, increase RNP 0.15 all Cats visibility to RVR 6000.

ALSF-2

A

MISSED APPROACH: Climb to 5000 on track 020° to USAZY and right turn to ODIFU and track 181° to KRNL and hold.

ATIS	FAIRBANKS APP CON	FAIRBANKS TOWER	GND CON	CLNC DEL
124.4	125.35 363.2	118.3 257.8	121.9	127.6



See planview for multiple IF locations.

5000	USAZY	ODIFU	KRNL
↑ fr 020°	↪	↙ fr 181°	△

VGSI and RNAV glidepath not coincident (VGSI Angle 3.00/TCH 73).

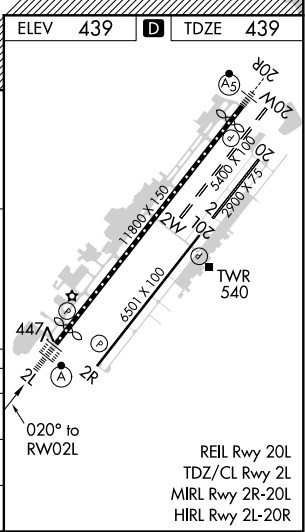
JIRIG 2200 020° HONUT 1600 RW02L

GP 3.00° TCH 56

2.1 NM 3.5 NM

CATEGORY	A	B	C	D
RNP 0.15 DA		798/40	359 (400-¾)	
RNP 0.30 DA		851/45	412 (500-⅞)	

AUTHORIZATION REQUIRED



AK, 31 DEC 2020 to 25 FEB 2021

AK, 31 DEC 2020 to 25 FEB 2021