

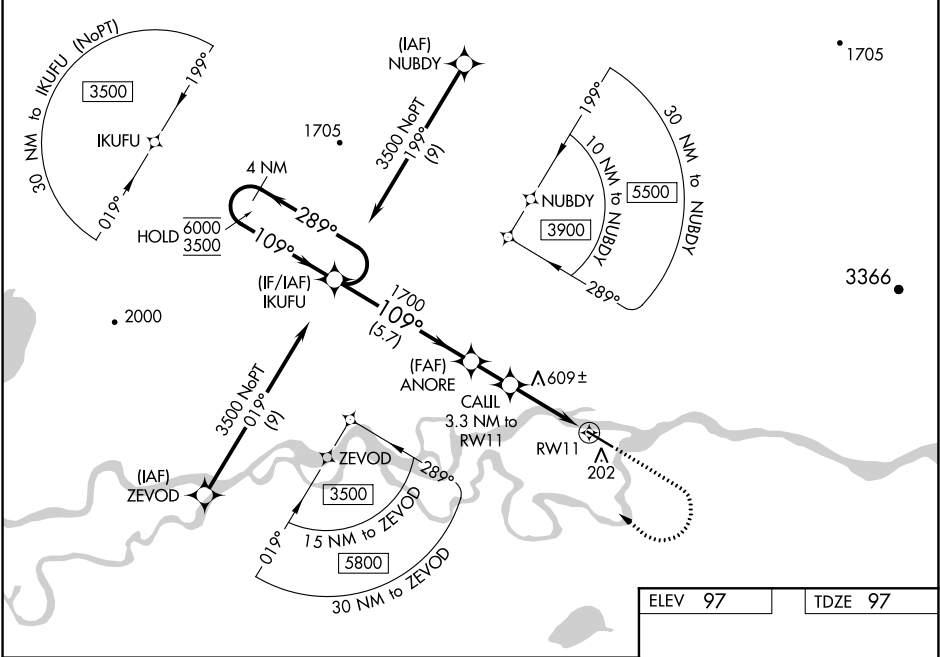
WAAS CH 45838 W11A	APP CRS 109°	Rwy Idg 5800 TDZE 97 Apt Elev 97
--	------------------------	---

RNAV (GPS) RWY 11

ANIAK (ANI)(PANI)

RNP APCH.		
<div><div><div><div>▼</div><div>▲</div><div>❄️</div></div><div>-38°C</div></div><div>Circling NA north of Rwy 11-29. Rwy 11 helicopter visibility reduction below ¾ SM NA. Inop table does not apply to LPV, LNAV/VNAV all Cats, LNAV Cat A. For uncompensated Baro-VNAV systems, LNAV/VNAV NA below -21°C or above 54°C. For inop ALS, increase LNAV Cat C/D visibility to 2 ½ SM.</div></div>	<div>MALSF</div> <div><div><div></div><div></div><div></div></div></div> <div>MISSED APPROACH: Climb to 1500 then climbing right turn to 3500 direct IKUFU and hold, continue climb-in-hold to 3500.</div>	

AWOS-3P 124.3	ANCHORAGE CENTER 118.15 251.05	CLNC DEL 118.15	CTAF 122.1
-------------------------	--	---------------------------	----------------------



4 NM Holding Pattern		IKUFU		ANORE		CAIL		IKUFU	
6000 ← 289° 3500 → 109°		1700		1700		3.3 NM to RW11		1500 3500	
GP 3.00° TCH 35		109°		*1160		*2.3 NM to RW11		*LNAV only	
		5.7 NM		1.6 NM		1 NM		2.3 NM	
CATEGORY	A	B	C	D					
LPV DA	347-1 250 (300-1)								
LNAV/VNAV DA	994-4 897 (900-4)								
LNAV MDA	860-1 763 (800-1)				860-2 763 (800-2)				
CIRCLING	860-1 763 (800-1)	860-1¼ 763 (800-1¼)	860-2½ 763 (800-2½)	1200-3 1103 (1200-3)					

