

LOC/DME I-OME <b>108.7</b> Chan <b>24</b>	APP CRS <b>099°</b>	Rwy Idg <b>6009</b> TDZE <b>16</b> Apt Elev <b>38</b>
---	------------------------	---

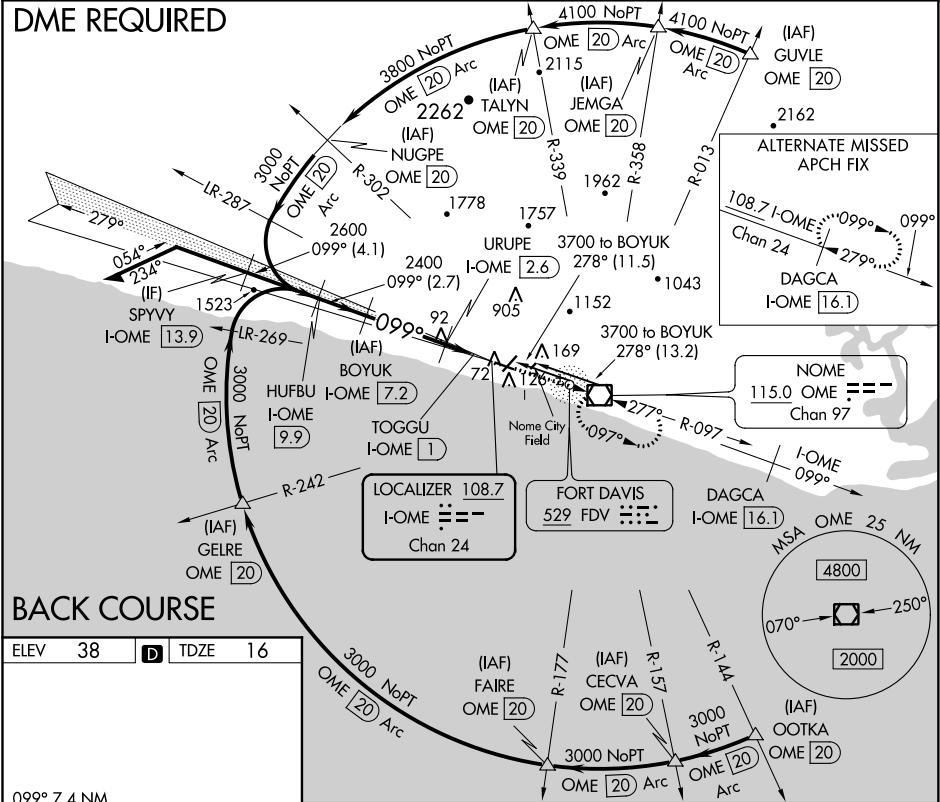
LOC/DME BC RWY 10  
NOME (OME) (PAOM)

**▼** LOC BC unusable inside TOGGU/I-OME 1 DME. Night landing:  
Rwy 10 operational VGSI required, remain on or above VGSI  
glidepath until threshold. Night landing: Rwy 21 NA. Circling  
NA for Cats C and D north of Rwy 10-28.

**❄** -34°C

MISSED APPROACH: Climb to 3000  
direct OME VOR/DME and hold,  
continue climb-in-hold to 3000.

AFIS <b>119.925</b>	ANCHORAGE CENTER <b>133.3 290.4</b>	NOME RADIO <b>123.6</b> (CTAF) <b>①</b>
------------------------	--	--



MIRL Rwy 3-21 **①**  
 HIRL Rwy 10-28 **①**  
 REIL Rwy 3 and 10 **①**

Disregard GS indications. BOYUK

Remain within 10 NM

3100

279°

099°

2600

Use I-OME DME when on the localizer course.

I-OME [7.2]

HUFBU I-OME [9.9]

2400

3.00° TCH 38

960

2.7 NM

4.5 NM

1.6 NM

1.3 NM

URUPE I-OME [2.6]

TOGGU I-OME [1]

3000

OME

CATEGORY	A	B	C	D
S-10	340-1½ 324 (400-1½)			
<b>C</b> CIRCLING	540-1½ 502 (600-1½)		700-2 662 (700-2)	

AK, 31 DEC 2020 to 25 FEB 2021

AK, 31 DEC 2020 to 25 FEB 2021