

NDB ICW	APP CRS	Rwy Idg
<b>525</b>	<b>051°</b>	<b>4600</b>
		TDZE
		<b>368</b>
		Apt Elev
		<b>368</b>

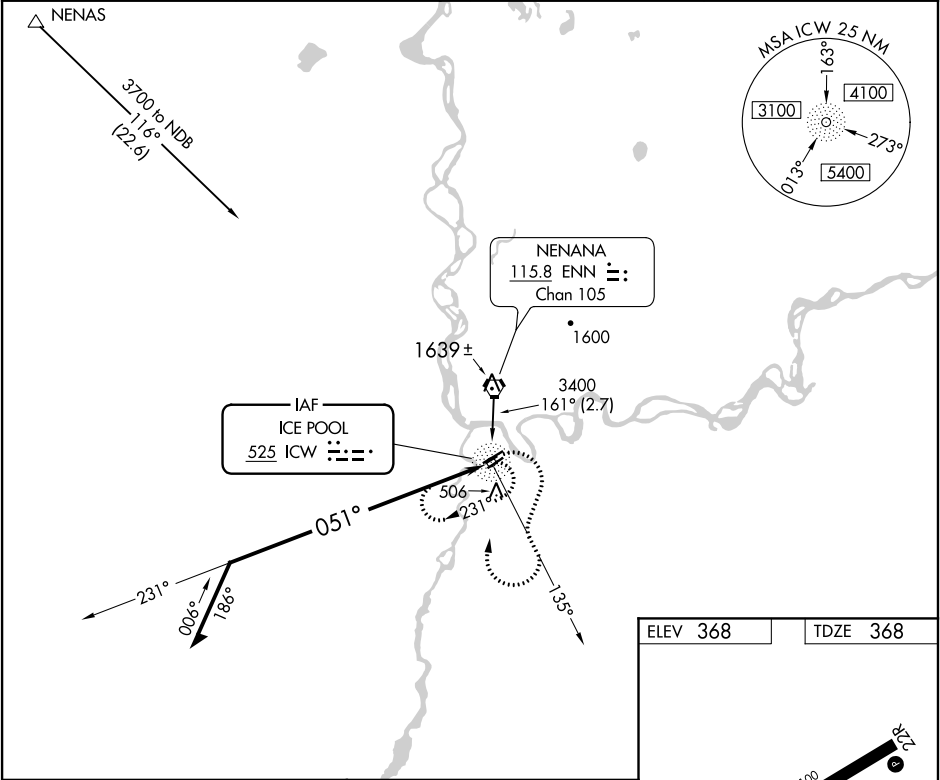
NDB RWY 4L

NENANA MUNI (ENN)(PANN)

**⚠** Circling NA northwest of Rwy 4L-22R. When local altimeter setting not received, use Fairbanks Intl altimeter setting and increase all MDAs 100 feet and visibility Cat C and Circling Cat D ¼ SM. Procedure NA at night. Circling NA to Rwy 4R, 22L, 4W and 22W. Rwy 4L helicopter visibility reduction below 1 SM NA.

MISSED APPROACH: Climbing right turn to 3200 on ICW NDB 135° bearing, then right turn direct ICW NDB and hold.

ASOS	FAIRBANKS APP CON	FAIRBANKS RADIO	CTAF
<b>125.2</b>	<b>125.35 363.2</b>	<b>122.5</b>	<b>122.1</b>



Remain within 10 NM

ICW NDB

3200

2400

231°

051°

3200

ICW 135°

ICW

CATEGORY	A	B	C	D
S-4L	1000-1	632 (700-1)	1000-1¾ 632 (700-1¾)	1000-2 632 (700-2)
CIRCLING	1000-1	632 (700-1)	1000-1¾ 632 (700-1¾)	1000-2 632 (700-2)