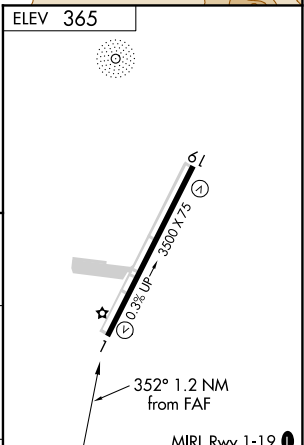
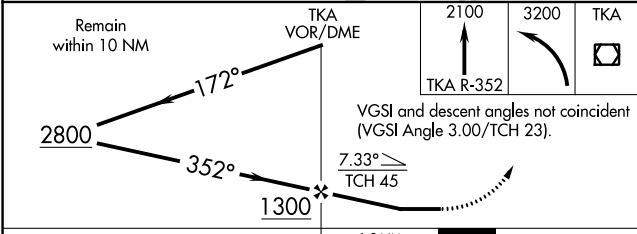
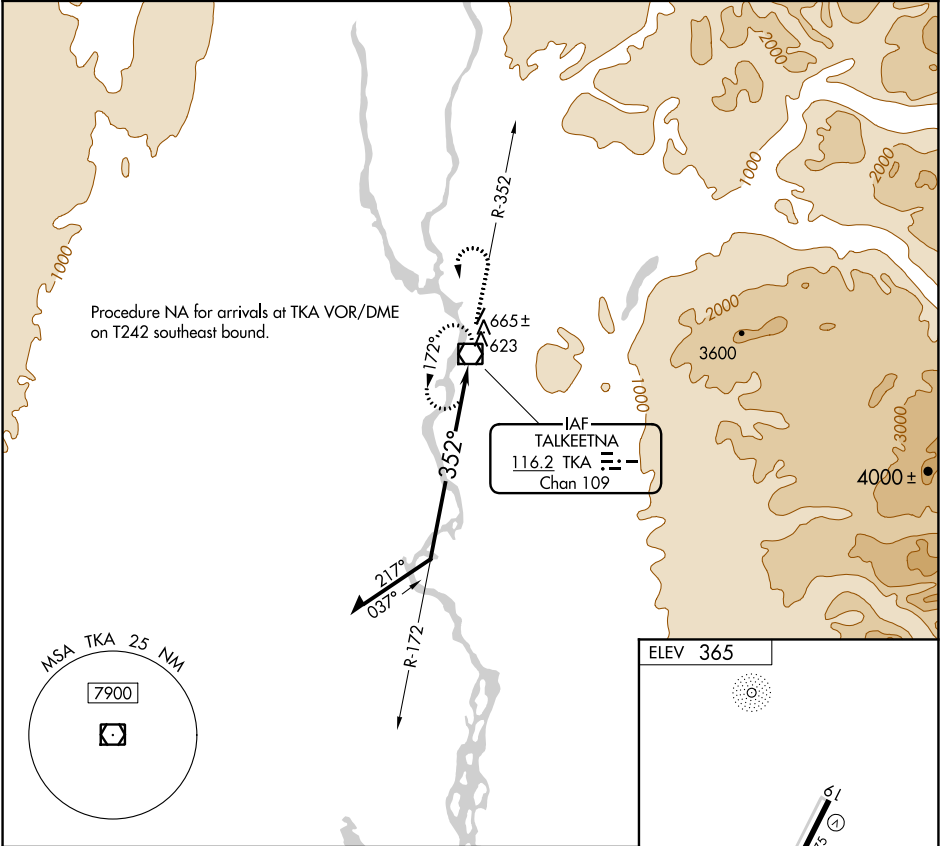


VOR/DME TKA 116.2 Chan 109	APP CRS 352°	Rwy Idg TDZE Apt Elev N/A N/A 365
--	------------------------	---

VOR-A

TALKEETNA(TKA)(PATK)

<div><div></div><div></div></div> <div>Circling NA east of Rwy 1-19. Rwy 1 helicopter visibility reduction below 1 SM NA. Circling Rwy 1 NA at night.</div>		MISSED APPROACH: Climb to 2100 on TKA VOR/DME R-352 then climbing left turn to 3200 direct TKA VOR/DME and hold.	
AFIS 135.2	ANCHORAGE CENTER 125.55 254.3	TALKEETNA RADIO 123.6 (CTAF) 0	UNICOM 123.0



CATEGORY	A	B	C	D	FAF to MAP 1.2 NM					
<div><div></div><div></div></div> <div>CIRCLING</div>	1080-1	715 (800-1)	1080-2 715 (800-2)	1200-2¾ 835 (900-2¾)	Knots	60	90	120	150	180
					Min:Sec	1:12	0:48	0:36	0:29	0:24

AK, 31 DEC 2020 to 25 FEB 2021

AK, 31 DEC 2020 to 25 FEB 2021