

APP CRS

171°

Rwy Idg

3500

TDZE

365

Apt Elev

365

RNAV (GPS) RWY 19

TALKEETNA(TKA)(PATK)

RNP APCH.

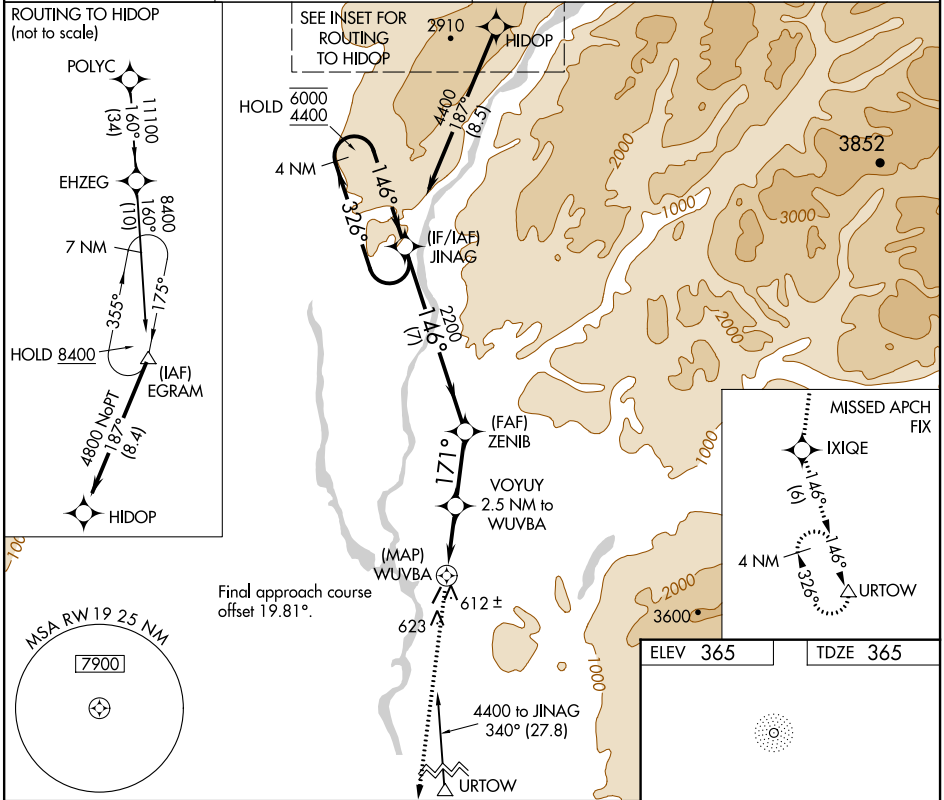
▼

▲

Circling NA east of Rwy 1-19. Rwy 19 helicopter visibility reduction below 1 SM NA. Straight-in Rwy 19 NA at night. Circling Rwy 19 NA at night.

MISSED APPROACH: Climb to 3000 direct IXIQE and on track 146° to URTOW and hold.

AFIS 135.2	ANCHORAGE CENTER 125.55 254.3	TALKEETNA RADIO 123.6 (CTAF) 0	UNICOM 123.0
---------------	----------------------------------	-----------------------------------	-----------------



VGSI and descent angles not coincident (VGSI Angle 3.00/TCH 23).

4 NM Holding Pattern

JINAG

6000

4400

326°

146°

ZENIB

3000

IXIQE

tr 146°

URTOW

VOYUY

2.5 NM to WUVBA

WUVBA

3.00° TCH 35

2200

171°

1340

7 NM

2.7 NM

2.5

0.5

CATEGORY	A	B	C	D
LNAV MDA	880-1	515 (600-1)	880-1 $\frac{3}{8}$	515 (600-1 $\frac{3}{8}$)
CIRCLING	880-1	515 (600-1)	1040-2 675 (700-2)	1200-2 $\frac{3}{4}$ 835 (900-2 $\frac{3}{4}$)

MIRL Rwy 1-19 0