

APP CRS
011°

Rwy Idg
3500

TDZE
363

Apt Elev
365

RNAV (GPS) RWY 1

TALKEETNA(TKA)(PATK)

RNP APCH.

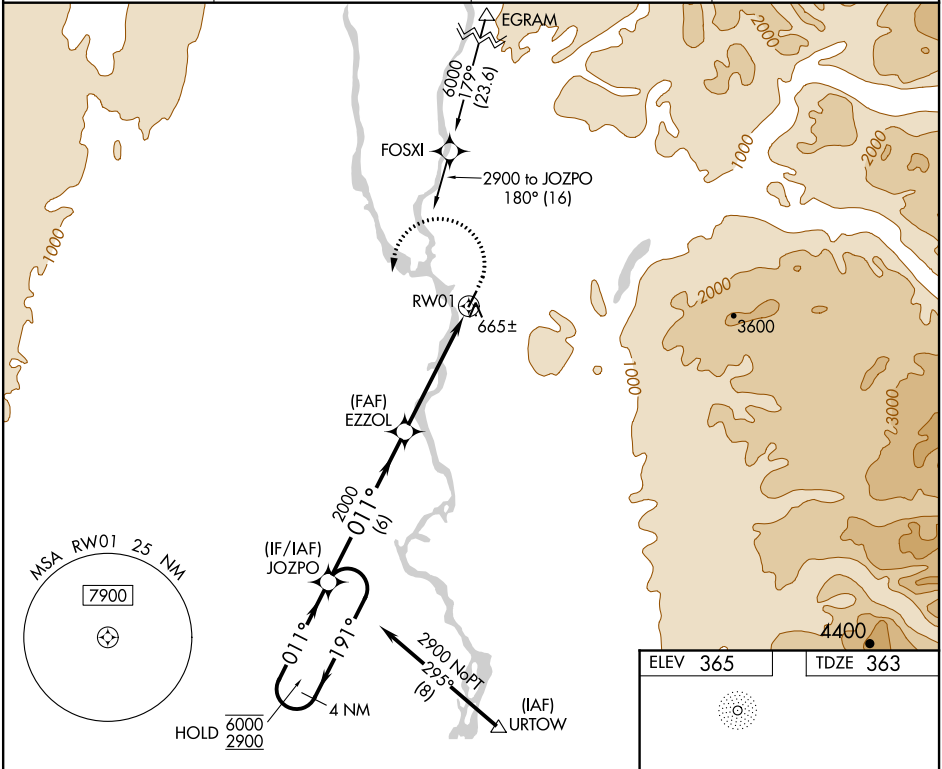
▼

▲

Circling NA east of Rwy 1-19. Rwy 1 helicopter visibility reduction below ¾ SM NA.
For uncompensated Baro-VNAV systems, LNAV/VNAV NA below -20°C or above 54°C.

MISSED APPROACH: Climb to 800 then climbing left turn to 2900 direct JOZPO and hold.

AFIS 135.2	ANCHORAGE CENTER 125.55 254.3	TALKEETNA RADIO 123.6 (CTAF) 0	UNICOM 123.0
----------------------	---	--	------------------------



4 NM Holding Pattern

VGSI and RNAV glidepath not coincident (VGSI Angle 3.00/TCH 23).

GP 3.00° TCH 45

JOZPO

EZZOL

RWY 1

JOZPO

800

2900

JOZPO

*1.7 NM to RWY 1

*LNAV only

6 NM

3.3 NM

1.7 NM

CATEGORY	A	B	C	D
LNAV/VNAV DA	922-2 559 (600-2)			
LNAV MDA	920-1 557 (600-1)	920-1½ 557 (600-1½)		
CIRCLING	960-1 595 (600-1)	1040-2 675 (700-2)	1200-2¾ 835 (900-2¾)	

TALKEETNA, ALASKA

Amtd 1A 15AUG19

62°19'N-150°06'W

ELEV 365

TDZE 363

MIRL Rwy 1-19 0

AK, 31 DEC 2020 to 25 FEB 2021

AK, 31 DEC 2020 to 25 FEB 2021