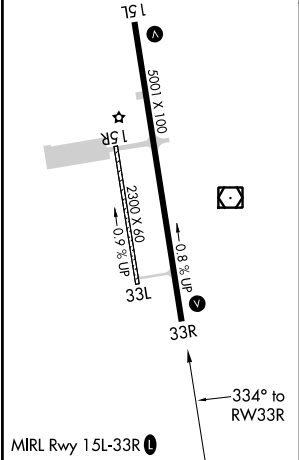
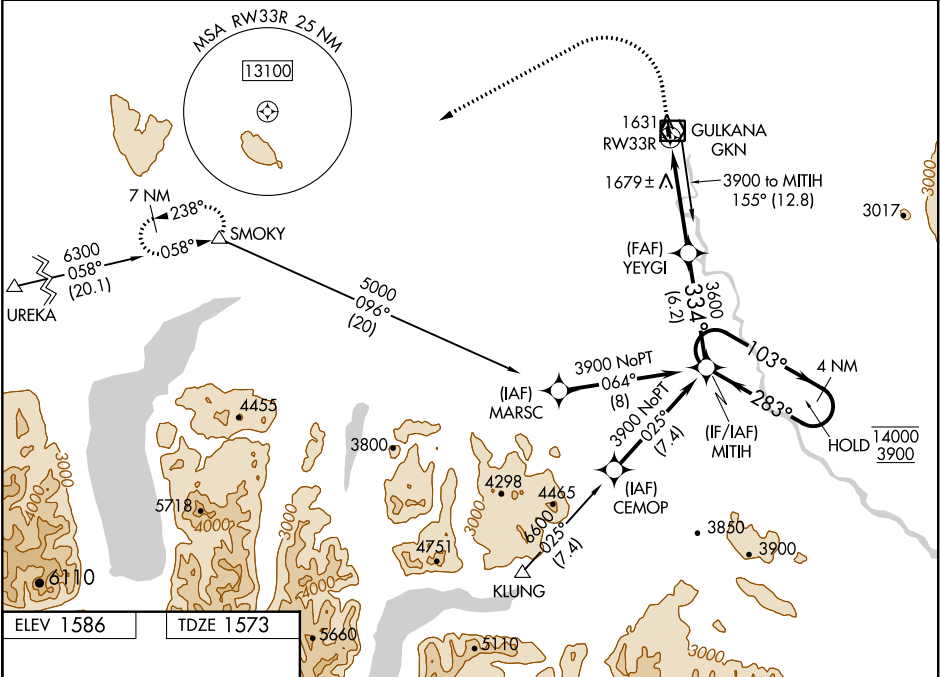


WAAS CH 40343 W33A	APP CRS 334°	Rwy ldg TDZE Apt Elev 5001 1573 1586
--	------------------------	--

RNAV (GPS) RWY 33R
GULKANA (GKN) (PAGK)

RNP APCH. ▼ -37°C Circling Rwy 15R, 33L NA at night. Rwy 33R helicopter visibility reduction below ¾ SM NA. For uncompensated Baro-VNAV systems, LNAV/VNAV NA below -25°C or above 54°C.	MISSED APPROACH: Climb to 2100 then climbing left turn to 7000 direct SMOKY and hold, continue climb-in-hold to 7000.
---	---

ASOS 134.85	ANCHORAGE CENTER 119.5 317.5	CTAF 122.9
-----------------------	--	----------------------



ELEV 1586	TDZE 1573
2100 7000 SMOKY VGSi and RNAV glidepath not coincident (VGSi Angle 3.00/TCH 29).	
* LNAV only.	
YEYGI MITIH 4 NM Holding Pattern	
103° 283° 14000 3900 GP 3.00° TCH 50	
1.3 NM 5 NM 6.2 NM	
CATEGORY	A B C D
LPV DA	1823-1 250 (300-1)
LNAV/VNAV DA	1890-1 317 (400-1)
LNAV MDA	2000-1 427 (500-1) 2000-1¼ 427 (500-1¼)
CIRCLING	2040-1 454 (500-1) 2080-1 494 (500-1) 2080-1½ 494 (500-1½) 2200-2 614 (700-2)

AK, 31 DEC 2020 to 25 FEB 2021

AK, 31 DEC 2020 to 25 FEB 2021