

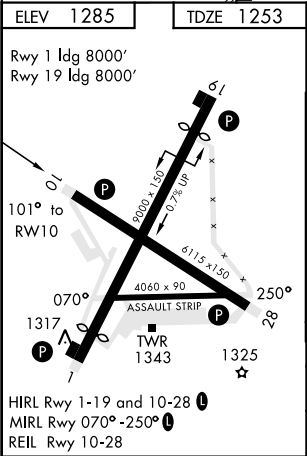
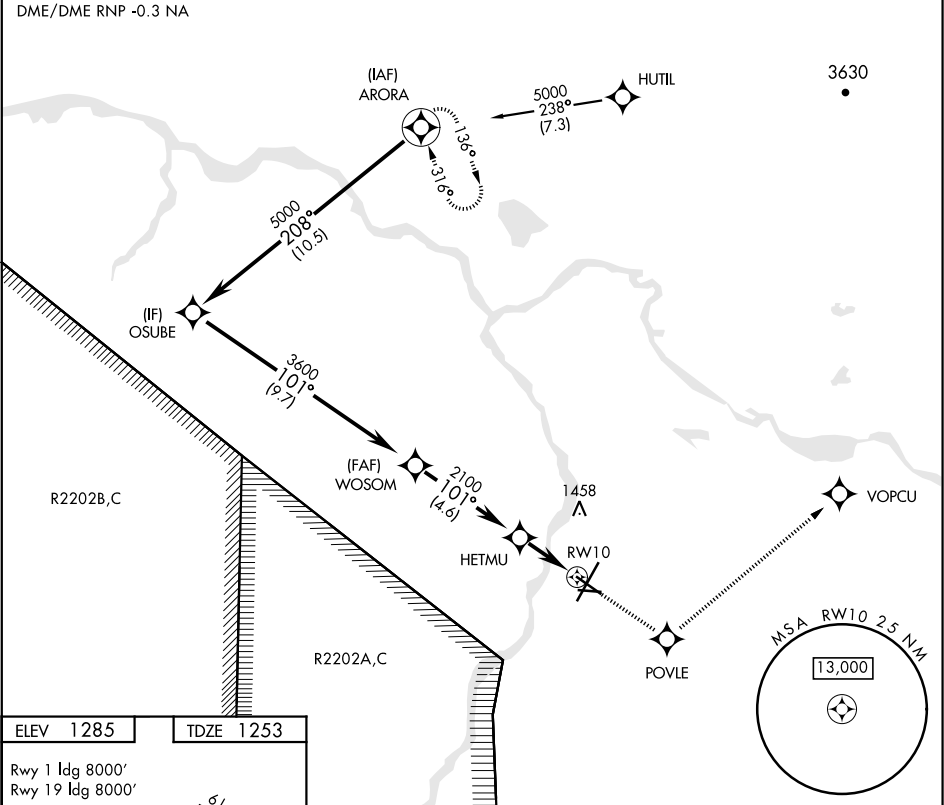
RNAV (GPS) RWY 10




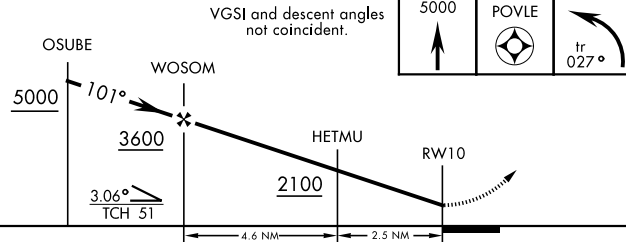
APCH CRS	Rwy ldg	6115
101°	TDZE	1253
	Arpt Elev	1285

AL-1218 [USA]

ALLEN AAF (PABI)

* Circling not authorized East of Rwy 1-19.				MISSED APPROACH: Climb to 5000 direct POVLE, and via 027° track to VOPCU, left turn via 289° track to ARORA and hold.			
ATIS	ASOS	ANCHORAGE CENTER	CTAF	ALLEN TOWER ★			GND CON
132.075	135.65	135.3 322.5	122.9 0	119.8 235.775 40.8 (E) FM			118.225 251.05



VGSi and descent angles not coincident.					5000 	POVLE 	 tr 027°
							
CATEGORY	A		B		C		D
LNNAV MDA	1580-1 327 (300-1)						
CIRCLING *	1720-1 435 (500-1)		1760-1 475 (500-1)		1760-1½ 475 (500-1½)		1860-2 575 (600-2)

RNAV (GPS) RWY 10

AK, 31 DEC 2020 to 25 FEB 2021

AK, 31 DEC 2020 to 25 FEB 2021