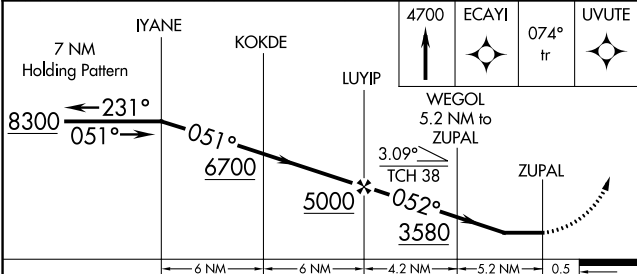
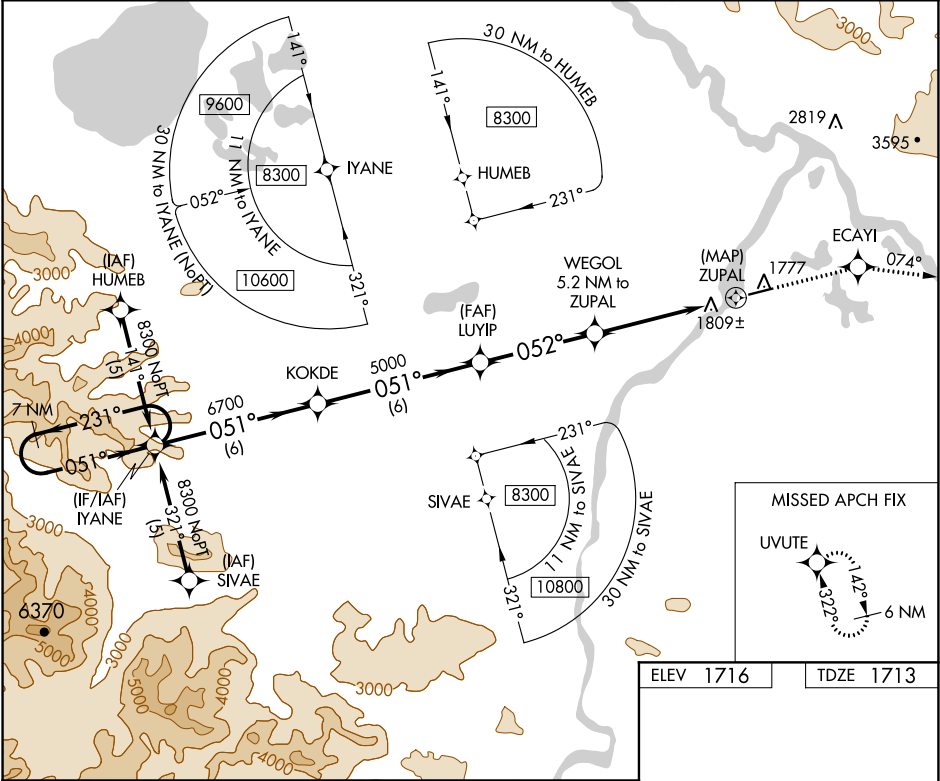


APP CRS	Rwy Idg	5100
052°	TDZE	1713
	Apt Elev	1716

RNAV (GPS) RWY 5
NORTHWAY (ORT)(PAOR)

-38°C	DME/DME RNP-0.3 NA. Helicopter visibility reduction below ¾ SM NA.	MISSED APPROACH: Climb to 4700 direct ECAYI and via 074° track to UVUTE and hold.
-------	---	---

ASOS 135.4	ANCHORAGE CENTER 126.55 323.0	NORTHWAY RADIO 123.6 (CTAF) 0
---------------	----------------------------------	----------------------------------



CATEGORY	A	B	C	D
LNVA MDA	2060-1	347 (400-1)	2060-1½	347 (400-1½)
CIRCLING	2220-1	504 (600-1)	2220-1½	504 (600-1½)

ELEV 1716

TDZE 1713

REIL Rwy 23 0

MIRL Rwy 5-23 0

AK, 31 DEC 2020 to 25 FEB 2021

AK, 31 DEC 2020 to 25 FEB 2021