

TACAN Z RWY 16

TACAN	EDF	APCH CRS	Rwy Idg	7493
Chan	81	133°	TDZE	213
			Arpt Elev	213

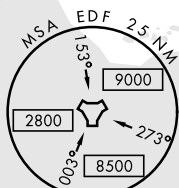
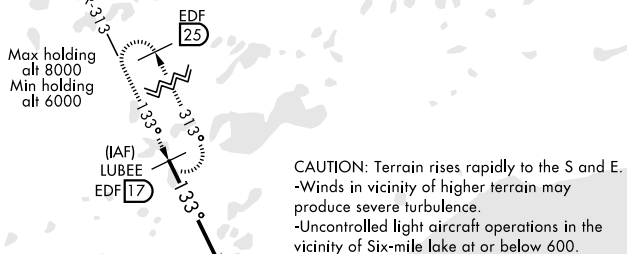
AL-1196 [USAF]

ELMENDORF AFB (PAED)

<p>▼ * Circling not authorized SW of Rwy 6 and 34.</p>	<p>MISSED APPROACH: Climbing left turn to 6000 via EDF TACAN R-313 to LUBEE and hold. Continue climb-in-hold to 6000.</p>
--	---

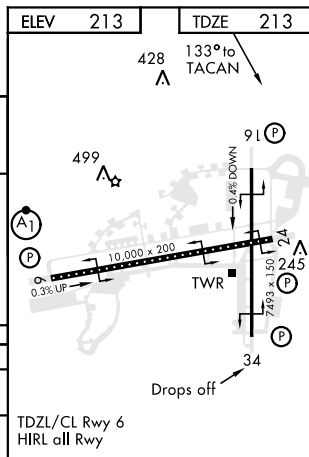
<p>ATIS ★</p> <p>124.3 273.5</p>	<p>ANCHORAGE APP CON</p> <p>North 118.6 290.5</p> <p>South 123.8 259.3</p>	<p>ELMENDORF TOWER</p> <p>127.2 352.05</p>	<p>GND CON</p> <p>121.8 275.8</p>	<p>CLNC DEL</p> <p>128.8 306.925</p>	<p>PAR</p>
----------------------------------	--	--	-----------------------------------	--------------------------------------	------------

Visibility reduction by Helicopters NA.



EMERG SAFE ALT 100 NM 15,200

	LUBEE R-313	VGSI and descent angles not coincident (VGSI angle 3.00°/TCH 47°).	6000	EDF R-313	LUBEE
	6000	133°	3900	CEGEN	12
			2000	BETUN	6
			2000	HADUL	1
			3.08° TCH 56		
			5 NM	0.3 NM	
CATEGORY	A	B	C	D	
S-16	700-1	487 (500-1)	700-1 3/8	487 (500-1 3/8)	
CIRCLING*	800-1	587 (600-1)	920-2 707 (800-2)	920-2 1/4 707 (800-2 1/4)	



TACAN Z RWY 16