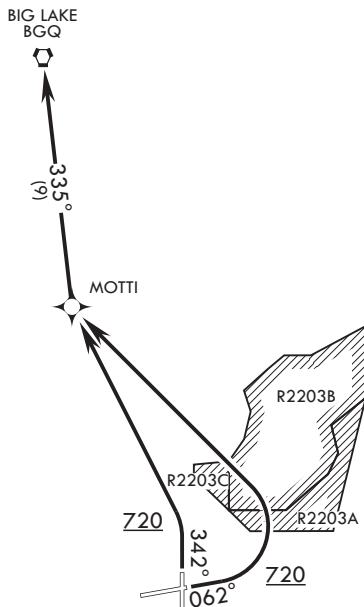


ATIS ★ 124.3 273.5
 CLNC DEL 128.8 306.925
 GND CON 121.8 275.8
 TOWER 127.2 352.05
 ANCHORAGE APP CON/DEP CON
 118.6 290.5



**RADAR
REQUIRED**

**GPS and
RNAV1
REQUIRED**

(For non-GPS
equipped aircraft)

Rwy 6-34 not authorized
if R-2203 active.



DEPARTURE ROUTE DESCRIPTION

TAKE-OFF RWY 6: Climb heading 062° to 720, then turn left direct MOTTI, thence via 335° track to BGQ VORTAC at assigned altitude.

TAKE-OFF RWY 34: Climb heading 342° to 720, then turn left direct MOTTI, thence via 335° track to BGQ VORTAC at assigned altitude.