

## EEEEGL FOUR DEPARTURE

SHL-1196 [USAF]

ELMENDORF AFB (PAED)

ANCHORAGE, ALASKA

ATIS ★ 124.3 273.5  
 CLNC DEL  
 128.8 306.925  
 GND CON  
 121.8 275.8  
 ELMENDORF TOWER  
 127.2 352.05  
 ANCHORAGE  
 DEP CON  
 118.6 290.5

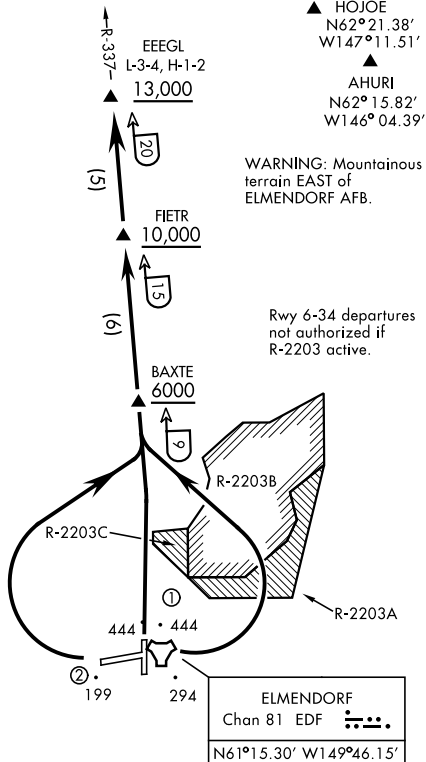
▲ SKWEN  
 N62°03.10'  
 W151°06.26'

▲ GERDE  
 N61°53.90'  
 W153°23.79'

▲ SPAIR  
 N60°37.16'  
 W154°19.90'

Rwy	Knots	60	120	180	240	300	360
6	V/V(fpm)	601	1202	1803	2404	3005	3606
24	V/V(fpm)	581	1162	1743	2324	2905	3486
34	V/V(fpm)	656	1312	1968	2624	3280	3936

ATC Climb Rate to 13,000



- ① Numerous trees to 444' MSL within 7300' of DER and 1850' left and right of centerline.
- ② 210' terrain 930' from DER, 730' right of centerline and 281' MSL (21' AGL) trees 4100' from DER, 1230' right of centerline.

NOTE: Chart not to scale



## DEPARTURE ROUTE DESCRIPTION

**TAKE-OFF RUNWAY 6:** Climbing left turn to FL200, intercept EDF R-337 outbound. Cross BAXTE at or above 6000, cross FIETR at or above 10,000, cross EEEGL at or above 13,000. Upon leaving 13,000, proceed on course. Maintain FL200 or ATC assigned altitude.

**TAKE-OFF RUNWAY 24:** Climbing right turn to FL200, intercept EDF TACAN R-337 outbound. Cross FIETR at or above 10,000, cross EEEGL at or above 13,000. Upon leaving 13,000, proceed on course. Maintain FL200 or ATC assigned altitude.

**TAKE-OFF RUNWAY 34:** Climb to FL200, intercept EDF R-337 outbound. Cross BAXTE at or above 6000, cross FIETR at or above 10,000, cross EEEGL at or above 13,000. Upon leaving 13,000, proceed on course. Maintain FL200 or ATC assigned altitude.

EEEEGL FOUR DEPARTURE

Orig 05NOV20

ANCHORAGE, ALASKA  
ELMENDORF AFB (PAED)