

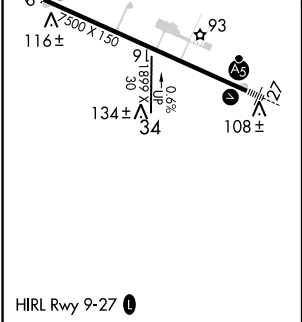
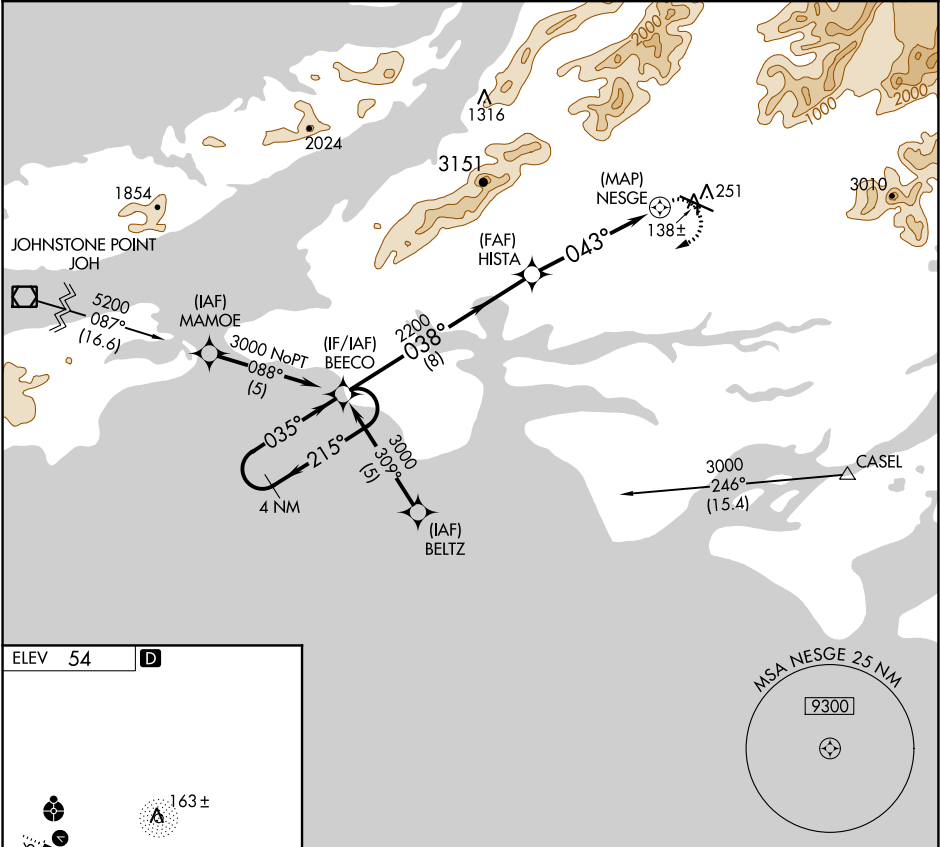
APP CRS	Rwy Idg	N/A
043°	TDZE	N/A
	Apt Elev	54

RNAV (GPS)-B

MERLE K (MUDHOLE) SMITH (CDV)(PACV)

<p>NA</p> <p>DME/DME RNP-0.3 NA. Circling to Rwy 16/34 NA at night. When local altimeter setting not received use Middleton Island altimeter setting and increase all MDA 180 feet. Circling NA north of Rwy 9/27. Helicopter visibility reduction below 1 SM not authorized.</p>	<p>MISSED APPROACH: Climbing right turn to 3000 direct BEECO and hold.</p>
---	--

ASOS 134.8	ANCHORAGE CENTER 119.3 133.6 269.4	JUNEAU RADIO 122.2 123.6 (CTAF) 0
---------------	---------------------------------------	--------------------------------------



4 NM Holding Pattern		BEECO	3000	BEECO
3000		215°	035°	038°
		2200	043°	NESGE
		8 NM	5.2 NM	
CATEGORY	A	B	C	D
CIRCLING	500-1 446 (500-1)	520-1 466 (500-1)	520-1½ 466 (500-1½)	620-2 566 (600-2)

RNAV (GPS)-B

AK, 31 DEC 2020 to 25 FEB 2021

AK, 31 DEC 2020 to 25 FEB 2021