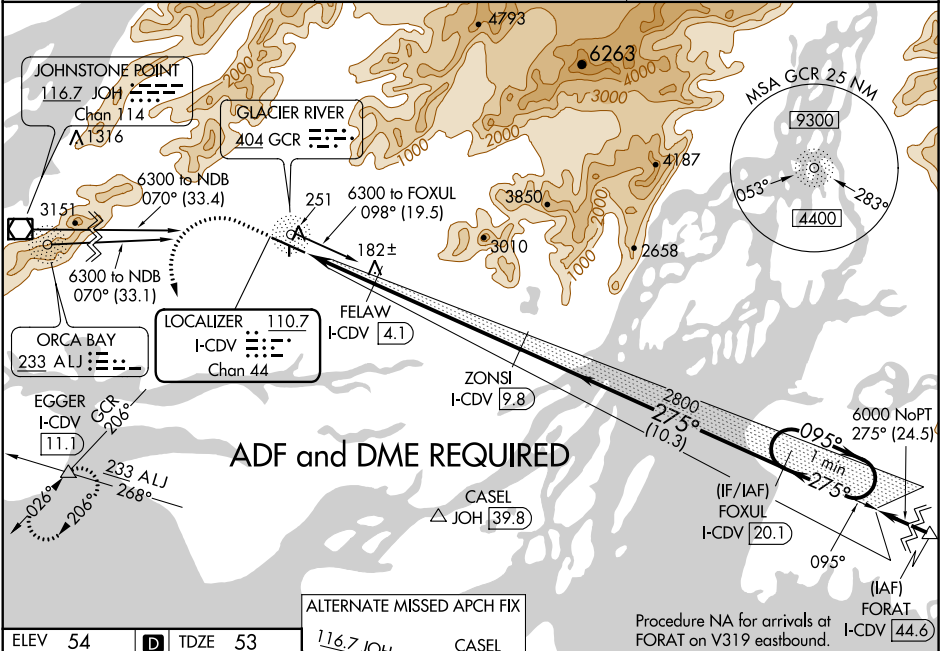


LOC/DME I-CDV 110.7 Chan 44	APP CRS 275°	Rwy ldg TDZE Apt Elev 7500 53 54
---	------------------------	--

ILS or LOC RWY 27
MERLE K (MUDHOLE) SMITH (CDV)(PACV)

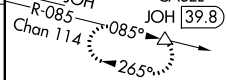
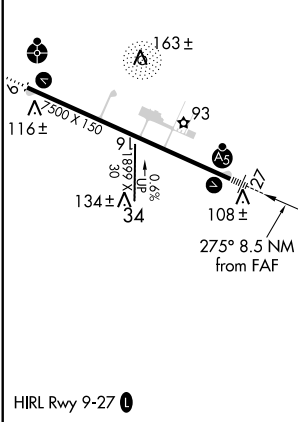
A ADF required. DME required. Circling NA north of Rwy 9-27. Circling to Rwy 16/34 NA at night.	MALSR 	MISSED APPROACH: Climb to 700 then climbing left turn to 5000 on heading 180° and GCR NDB bearing 206° to EGGER INT/I-CDV 11.1 DME and hold, continue climb-in-hold to 5000.
---	-----------	--

ASOS 134.8	ANCHORAGE CENTER 119.3 133.6 269.4	JUNEAU RADIO 122.2 123.6 (CTAF) 0
----------------------	--	---



ADF and DME REQUIRED

ELEV 54	D	TDZE 53
---------	----------	---------



700 ↑ hdg 180°	5000 GCR 206°	EGGER △	ZONSI I-CDV [9.8]	FOXUL I-CDV [20.1]	One Minute Holding Pattern
* LOC only. I-CDV [1.3]	* I-CDV [2.4]	FELAW I-CDV [4.1]	2800	275°	095°
1.1 NM	1.7 NM	5.7 NM	10.3 NM		
CATEGORY	A	B	C	D	
S-ILS 27	303/24 250 (300-½)				
S-LOC 27	440/24 387 (400-½)		440/35 387 (400-¾)		
CIRCLING	460-1 406 (500-1)	520-1 466 (500-1)	520-1½ 466 (500-½)	620-2 566 (600-2)	