

VOR/DME YAK	APP CRS	Rwy Idg	7732
113.3	308°	TDZE	26
Chan 80		Apt Elev	33

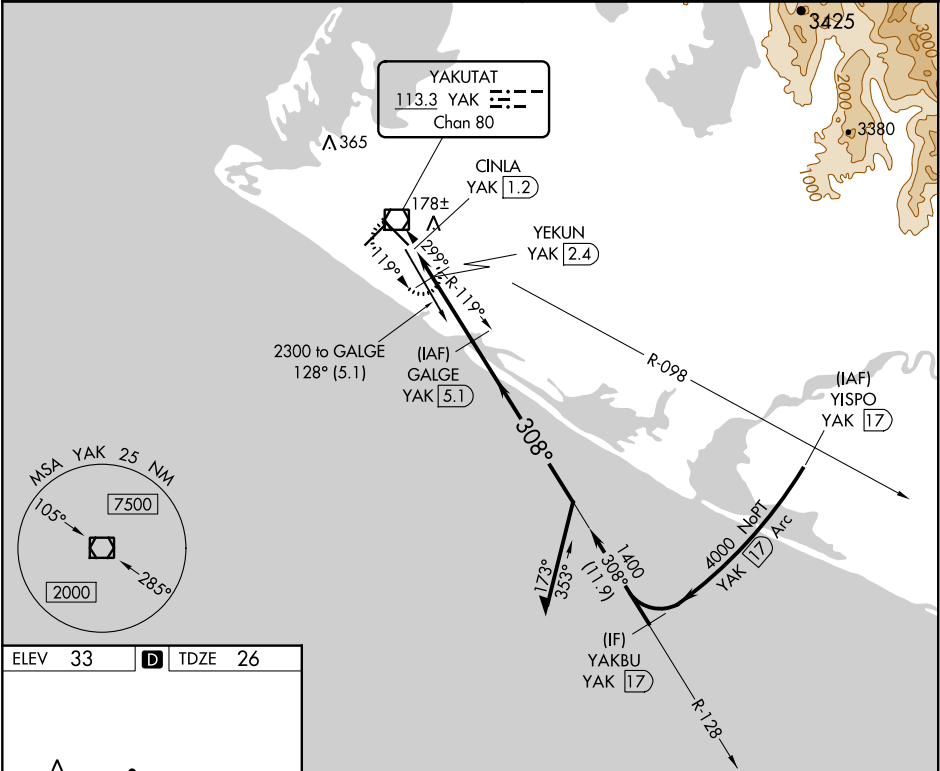
VOR/DME RWY 29
YAKUTAT (YAK) (PAYA)

⚠ Inop table does not apply to Cats A/B.
⚠ For inop MALSR, increase Cats C/D visibility to 1½ mile.

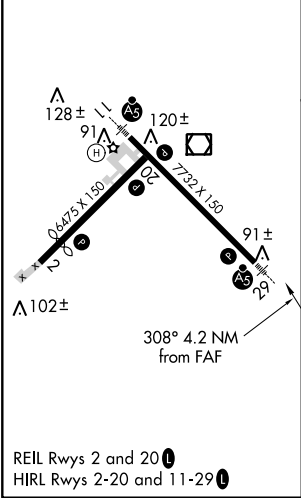
MALSR

MISSED APPROACH: Climb to 2000 direct YAK
VOR/DME and hold, continue climb-in-hold to 2000.

ASOS 135.75	ANCHORAGE CENTER 119.0 263.1	JUNEAU RADIO 123.6 (CTAF) 0
----------------	---------------------------------	---------------------------------------



ELEV 33	D	TDZE 26
---------	----------	---------



2000	YAK	VGSI and descent angles not coincident (VGSI Angle 3.00/TCH 51).			
↑		Remain within 10 NM			
YAK VOR/DME		YAKUN YAK 2.4	GALGE YAK 5.1	128°	
CINLA YAK 1.2		≤3.00° TCH 52	540	308°	1800
0.3		1.2 NM	2.7 NM		
CATEGORY	A	B	C	D	
S-29	440-1 414 (500-1)				
C CIRCLING	500-1 467 (500-1)	520-1 487 (500-1)	620-1½ 587 (600-1½)	720-2¼ 687 (700-2¼)	