

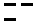
FAKES FOUR DEPARTURE

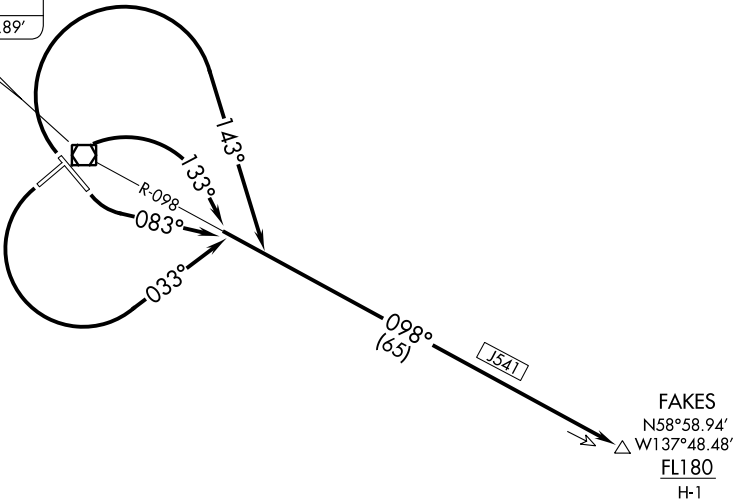
YAKUTAT(YAK)(PAYA)
YAKUTAT, ALASKA

AL-1193 (FAA)

ANCHORAGE CENTER
119.0 263.1
JUNEAU RADIO
123.6 (CTAF)

TOP ALTITUDE:
ASSIGNED BY ATC

YAKUTAT
113.3 YAK 
Chan 80
N59°30.65'-W139°38.89'



TAKEOFF MINIMUMS

Rwys 2, 11, 20, 29: Standard with minimum climb
of 280' per NM to FL180.

NOTE: Chart not to scale.



DEPARTURE ROUTE DESCRIPTION

- TAKEOFF RUNWAY 2: Climbing right turn on heading 133°, thence. . .
- TAKEOFF RUNWAY 11: Climbing left turn on heading 083°, thence. . .
- TAKEOFF RUNWAY 20: Climbing left turn on heading 033°, thence. . .
- TAKEOFF RUNWAY 29: Climbing right turn on heading 143°, thence. . .

. . . intercept YAK VOR/DME R-098 to FAKES. Cross FAKES at or above
FL180 for assigned route of flight.

FAKES FOUR DEPARTURE

YAKUTAT, ALASKA
YAKUTAT(YAK)(PAYA)