

VOR/DME RWY 29  
GUSTAVUS (GST)(PAGS)

AWOS-3P <b>125.9</b>	ANCHORAGE CENTER <b>133.2 360.65</b>	JUNEAU RADIO <b>122.65</b>	CTAF <b>122.5 0</b>
-------------------------	---	-------------------------------	------------------------

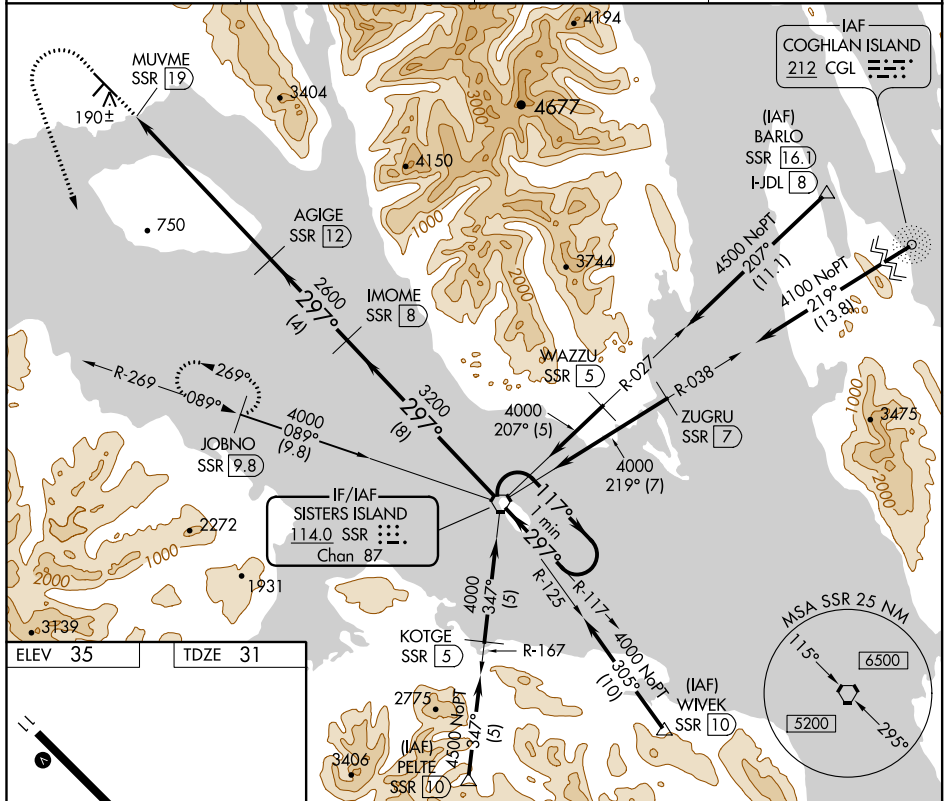


Diagram illustrating the MIRMIL 11-29 instrument approach. The chart shows a 3010x60 runway and a 6720x150 runway. A 297° 8 NM holding pattern is shown from the FAF. The approach includes a 1 NM segment, a 7 NM segment, a 4 NM segment, and an 8 NM segment. The chart also shows the MIRMIL 11-29 and REIL Rwy 11 and 29. The chart is titled 'MIRMIL 11-29' and 'REIL Rwy 11 and 29'.

AK, 31 DEC 2020 to 25 FEB 2021

AK, 31 DEC 2020 to 25 FEB 2021