

APP CRS	Rwy Idg	8457
070°	TDZE	25
	Apt Elev	26

# RNAV (GPS) V RWY 8

JUNEAU INTL (JNU)(PAJN)

**NA**  
-0°C

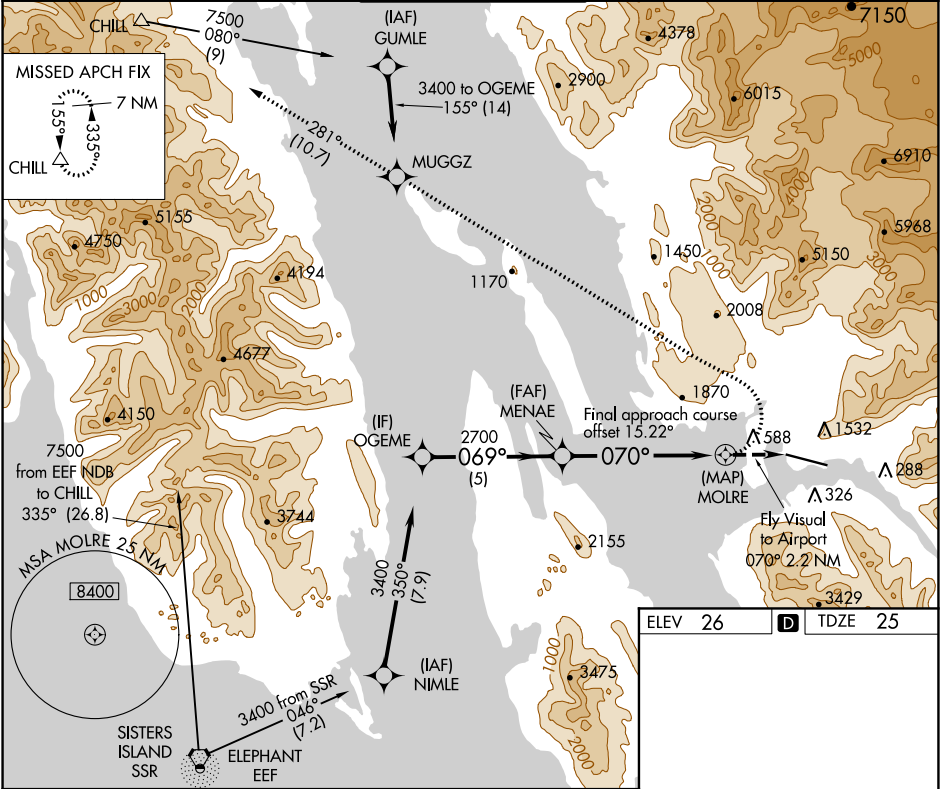
Circling NA at night. When VGSi inop, procedure NA at night. Visibility reduction by helicopters NA. DME/DME RNP-0.3 NA. Lead-in lights not aligned with final approach course. For inop Lead-in lights, increase visibility to 4 NM. Circling NA north of Rwy 8-26.

\* Missed approach requires minimum climb of 363 feet per NM to 3200.

**MALS**

MISSED APPROACH: Climbing left turn to 9000 direct MUGGZ and on track 281° to CHILL and hold, continue climb-in-hold to 9000.

ATIS 135.2	ANCHORAGE CENTER 133.9	JUNEAU TOWER ★ 118.7 (CTAF) 278.3	GND CON 121.9	JUNEAU RADIO 122.2
---------------	---------------------------	--------------------------------------	------------------	-----------------------



OGEME	VGSi and descent angles not coincident (VGSi Angle 3.50/TCH 38).		9000	MUGGZ	tr 281°	CHILL △
3400	MENAE		MOLRE		Fly Visual to Airport 070° 2.2 NM	
069°		2700	070°			
5 NM		3.08° TCH 50	5.8 NM		2.2 NM	
CATEGORY	A	B	C	D		
LNAV MDA*	1880-2	1855 (1900-2)	NA			
LNAV MDA	2340-3	2315 (2400-3)	NA			
CIRCLING	2340-3	2314 (2400-3)	NA			

ELEV 26

TDZE 25

TWR 107

8957 X 150

4600 X 150

260

Fly Visual to Airport 070° 2.2 NM

RLLS Rwy 8

REIL Rwy 8 and 26

HIRL Rwy 8-26

AK, 31 DEC 2020 to 25 FEB 2021

AK, 31 DEC 2020 to 25 FEB 2021