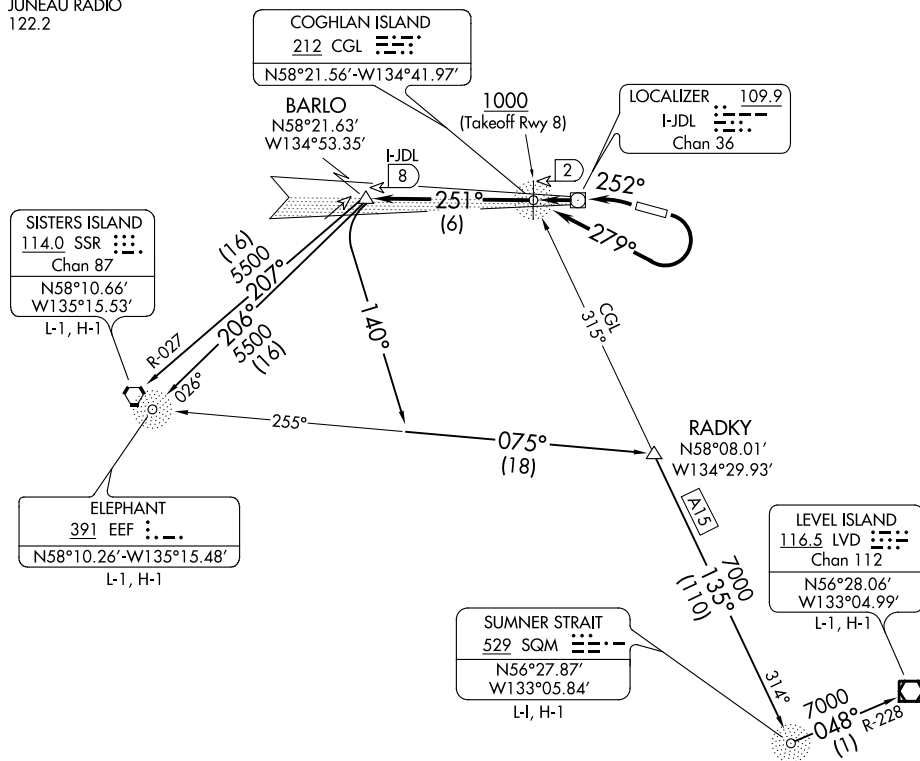


AL-1191 (FAA)

JUNEAU, ALASKA

ATIS  
 135.2  
 GND CON  
 121.9  
 JUNEAU TOWER ★  
 118.7 (CTAF) 278.3  
 ANCHORAGE CENTER  
 133.9  
 JUNEAU RADIO  
 122.2



## TAKEOFF MINIMUMS

Rwy 8: 1000-3 with minimum climb from 1000 as stated per transition.

Rwy 26: 600-2 or standard with minimum climb of 595' per NM to 800, then as stated per transition.

NOTE: SISTERS ISLAND and ELEPHANT TRANSITION: Minimum climb of 330' per NM to 2800.

NOTE: LEVEL ISLAND and SUMNER STRAIT TRANSITIONS: Minimum climb of 385' per NM to 4600'.

NOTE: ADF required.

NOTE: Obtain ATC approval for this procedure if not issued as part of the IFR clearance.

CAUTION: Rapidly rising terrain to 3000' MSL north, south and east of airport.

(NARRATIVE ON FOLLOWING PAGE)

(NOTES CONTINUED ON FOLLOWING PAGE)

NOTE: Chart not to scale.

## JUNEAU SIX DEPARTURE (OBSTACLE)

(JNU6.JNU) 31DEC20

JUNEAU, ALASKA

JUNEAU INTL (JNU)(PAJN)

AK, 31 DEC 2020 to 25 FEB 2021