

WAAS CH 50220 W01A	APP CRS 008°	Rwy Idg TDZE Apt Elev	9300 2851 2884
--	------------------------	-----------------------------	---

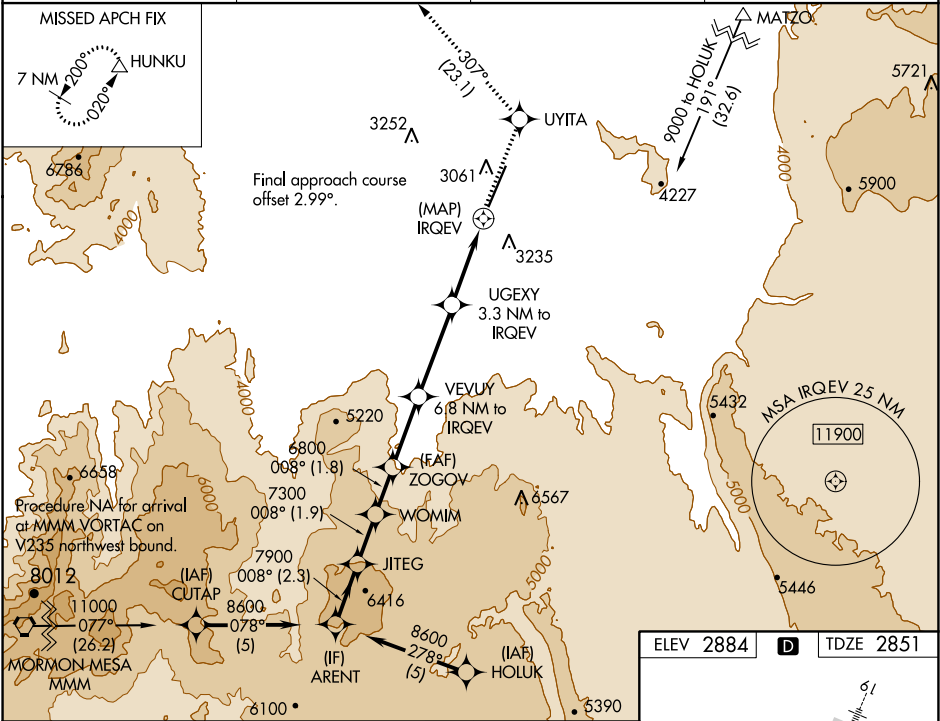
RNAV (GPS) RWY 1
ST GEORGE RGNL (SGU)

V
A
6 -6°C

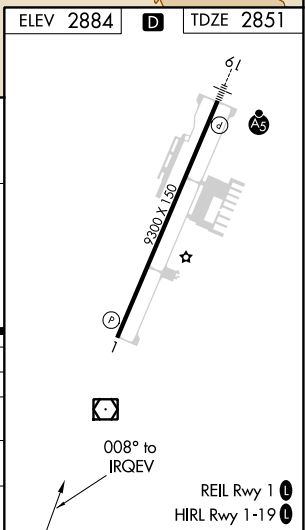
DME/DME RNP-0.3 NA. Helicopter visibility reduction below 1 SM NA.
Missed approach requires a minimum climb of 225 feet per NM to 6800.
† Missed approach requires a minimum climb of 220 feet per NM to 6700.

MISSED APPROACH: Climb to 9800 direct UYITA and on track 307° to HUNKU and hold, continue climb-in-hold to 9800.

AWOS-3PT 135.075	LOS ANGELES CENTER 124.2 343.6	CLNC DEL 133.3	UNICOM 122.8 (CTAF) 0
----------------------------	--	--------------------------	---------------------------------



ARENT		VGS1 and RNAV glidepath not coincident (VGS1 Angle 3.00 /TCH 50).		9800	UYITA	tr	HUNKU
JITEG		WOMIM	ZOGOV	VEVUY	UGEXY		
GP 3.60°		TCH 60					
8600		008°	7900	6800	5700	4340	
2.3 NM		1.9 NM	1.8 NM	2.7 NM	3.5 NM	3.3 NM	0.5
CATEGORY	A		B		C		D
LPV	DA#		3170-1		319 (300-1)		NA
RNAV	MDA †		3340-1		489 (500-1)		NA
RNAV	MDA		3760-1¼		909 (900-1¼)		NA
CIRCLING			3760-1¼		876 (900-1¼)		NA



SW-4, 03 DEC 2020 to 31 DEC 2020

SW-4, 03 DEC 2020 to 31 DEC 2020