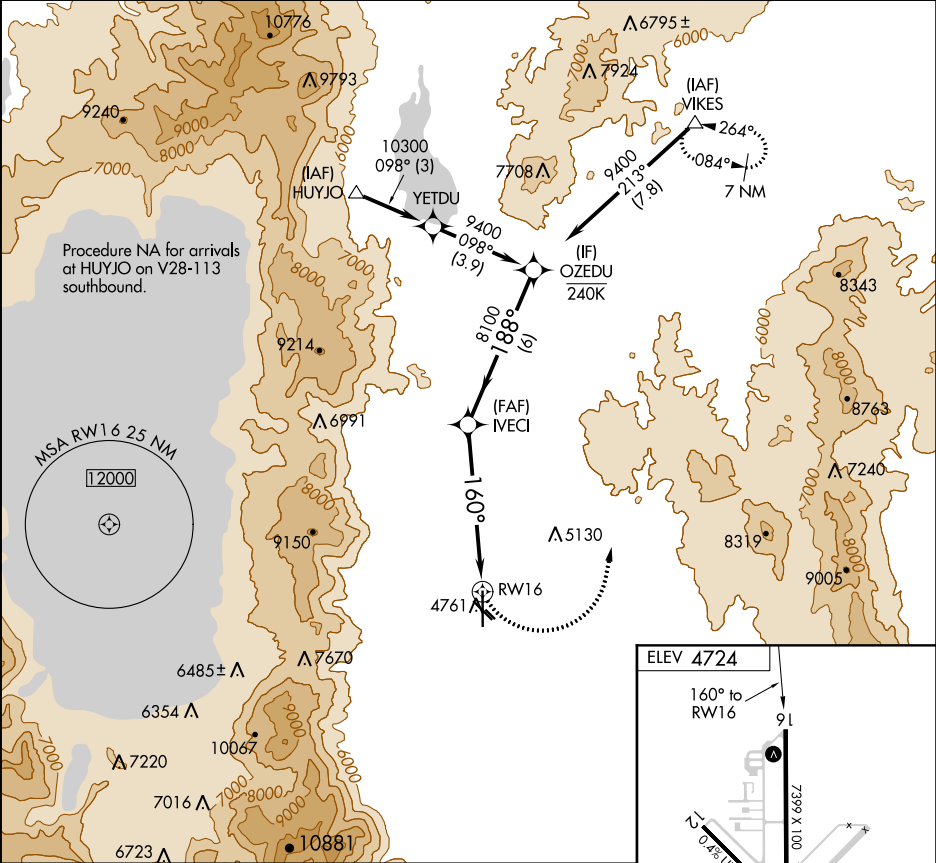


APP CRS
160°

Rwy Idg
TDZE
Apt Elev
**N/A
N/A
4724**

RNAV (GPS)-A
MINDEN-TAHOE (MEV)

RNP APCH.		MISSED APPROACH: Climbing left turn to 11000 direct VIKES and hold, continue climb-in-hold to 11000.	
▼ ▲ Circling NA for Cat D southwest of Rwys 12 and 34. Circling Rwy 12L, 30R NA at night.			
AWOS-3PT 119.325	NORCAL APP CON 119.2 279.55	CLNC DEL 133.25	UNICOM 123.05 (CTAF) 0



Category table

Diagram of the approach path

Diagram of the runway layout

CATEGORY	A	B	C	D
CIRCLING	6600-1¼ 1876 (1900-1¼)	6600-1½ 1876 (1900-1½)	6600-3	1876 (1900-3)

MINDEN, NEVADA
Amdt 1 13SEP18

39°00'N-119°45'W

MINDEN-TAHOE (MEV)
RNAV (GPS)-A

SW-4, 03 DEC 2020 to 31 DEC 2020

SW-4, 03 DEC 2020 to 31 DEC 2020