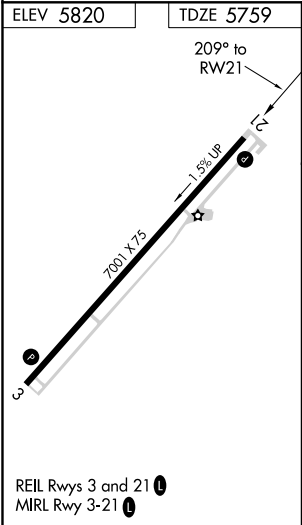
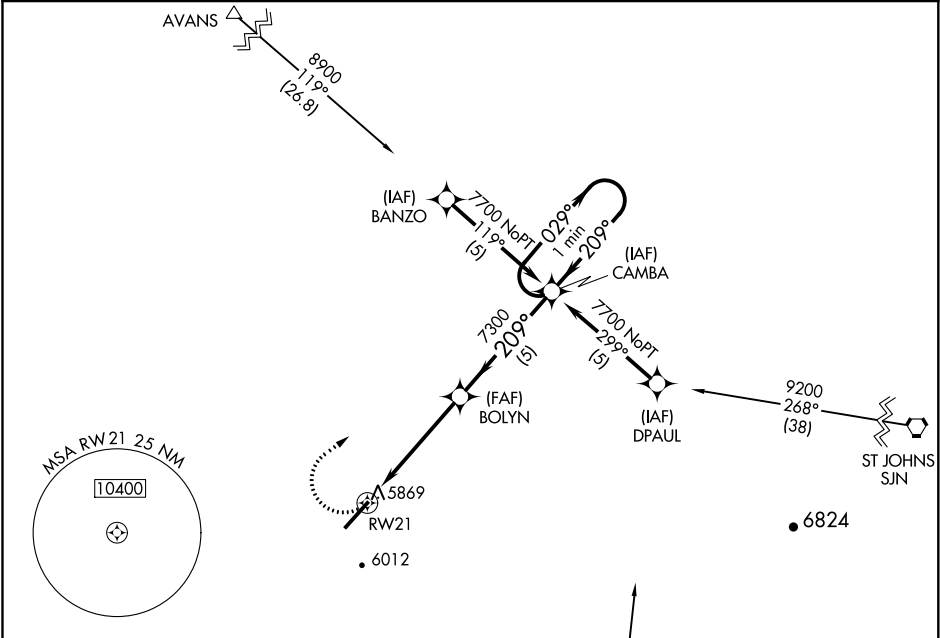


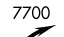


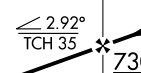
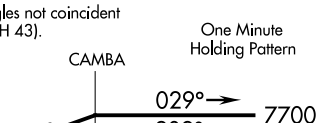
APP CRS	Rwy Idg	7001
209°	TDZE	5759
	Apt Elev	5820

GPS RWY 21
TAYLOR (TYL)

<div><div>▽</div><div>▲ NA</div></div>	MISSED APPROACH: Climbing right turn to 7700 direct CAMBA WP and hold.
--	--

AWOS-3PT 119.075	ALBUQUERQUE CENTER 132.9 239.05	UNICOM 122.7 (CTAF) 0
---------------------	------------------------------------	--------------------------



				VGSI and descent angles not coincident (VGSI Angle 3.00/TCH 43).		One Minute Holding Pattern			
									
CATEGORY		A		B		C		D	
S-21		6120-1 361 (300-1)						6120-1¼ 361 (300-1¼)	
CIRCLING		6320-1 500 (500-1)		6380-1 560 (600-1)		6380-1½ 560 (600-1½)		6480-2 660 (700-2)	

SW-4, 03 DEC 2020 to 31 DEC 2020

SW-4, 03 DEC 2020 to 31 DEC 2020