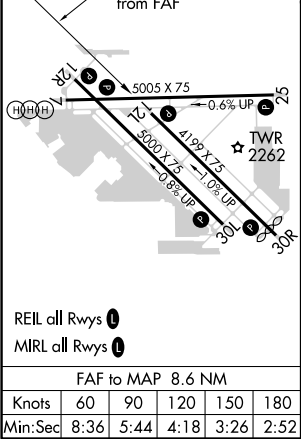
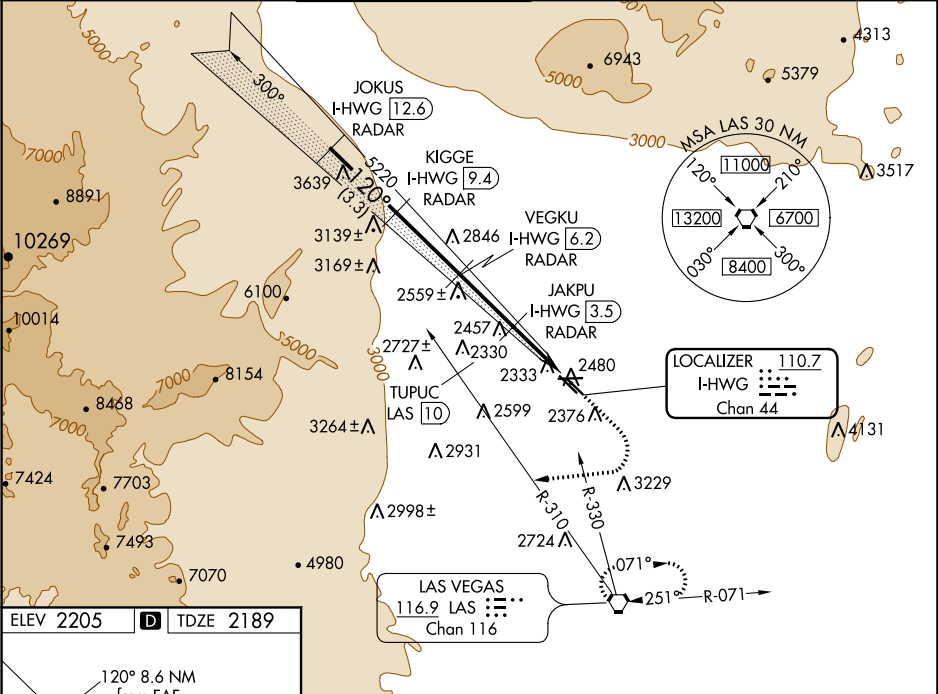


LOC/DME I-HWG 110.7 Chan 44	APP CRS 120°	Rwy Idg TDZE Apt Elev 4199 2189 2205
---	------------------------	--

ILS or LOC RWY 12L
NORTH LAS VEGAS (VGT)

DME and RADAR required. ▼ When local altimeter setting not received, use McCarran Intl altimeter setting and increase DA to 2478, and visibility Cats A/B ¼ mile; increase all MDA 40 feet. Rwy 12L helicopter visibility reduction below ¾ SM NA.	MISSED APPROACH: Climb to 2600, then climbing right turn heading 250° to 6000, intercept LAS R-310 outbound to TUPUC/LAS 10 DME then turn right via LAS R-330 inbound to LAS VORTAC and hold.
---	---

ATIS 118.05	LAS VEGAS APP CON 119.4 360.85	NORTH LAS VEGAS TOWER* 125.7 (CTAF) 360.75	GND CON 121.7	CLNC DEL 124.0	UNICOM 122.95
-----------------------	--	--	-------------------------	--------------------------	-------------------------



JOKUS I-HWG 12.6 RADAR	KIGGE I-HWG 9.4 RADAR	2600	6000	LAS R-310 outbound	TUPUC LAS 10	LAS R-330 inbound	LAS
6200		5220		VEGKU I-HWG 6.2 RADAR		JAKPU I-HWG 3.5 RADAR	I-HWG 0.8
GS 3.20° TCH 48		*4160		*3260			
3.3 NM		3.2 NM		2.7 NM		2.7 NM	
CATEGORY	A	B	C	D			
S-ILS 12L	2456-1	267 (300-1)	NA				
S-LOC 12L	2620-1	431 (500-1)	NA				
CIRCLING	2720-1	515 (600-1)	NA				