

WAAS CH 82624 W16A	APP CRS 164°	Rwy Idg TDZE Apt Elev	8500 646 707
--	------------------------	-----------------------------	---

RNAV (GPS) RWY 16

LAUGHLIN/BULLHEAD INTL (IFP)

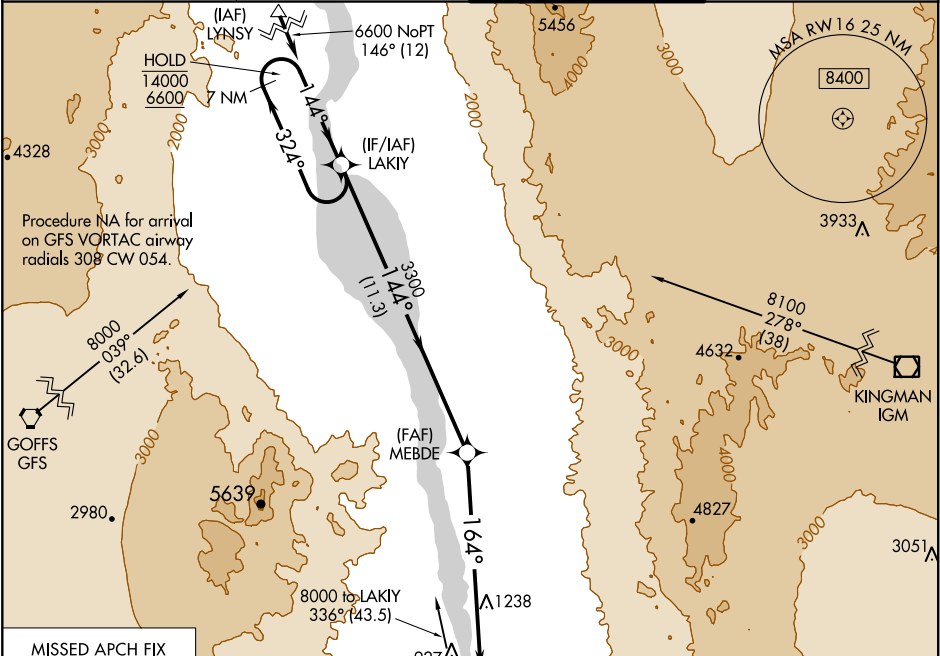
RNP APCH.

Procedure NA at night.

Rwy 16 helicopter visibility reduction below 3/4 SM NA.

MISSED APPROACH: Climb to 6300 direct CALRA and hold, continue climb-in-hold to 6300.

ATIS ★ 119.825	LOS ANGELES CENTER 134.65 360.65	BULLHEAD TOWER ★ 123.9 (CTAF) 0	GND CON 118.25
--------------------------	--	---	--------------------------



7 NM
Holding Pattern

14000

6600

324°

144°

VGSI and RNAV glidepath not coincident.
(VGSI Angle 3.00/TCH 49).

6300

CALRA

7 NM

11.3 NM

4.6 NM

3.7 NM

CATEGORY	A	B	C	D
LP MDA	1860-1¼ 1214 (1200-1¼)	1860-1½ 1214 (1200-1½)	1860-3	1214 (1200-3)
LNAV MDA	1860-1¼ 1214 (1200-1¼)	1860-1½ 1214 (1200-1½)	1860-3	1214 (1200-3)
CIRCLING	1860-1¼ 1153 (1200-1¼)	1860-1½ 1153 (1200-1½)	1860-3 1153 (1200-3)	2340-3 1633 (1700-3)

ELEV 707

TDZE 646

164° to RW16

0.9% UP → 8501 X 150

1.0% DOWN

TWR

REIL Rwy 16 and 34

MRL Rwy 16-34