

WAAS CH 73031 W17A	APP CRS 166°	Rwy Idg TDZE Apt Elev	6100 4297 4322
--	------------------------	-----------------------------	---

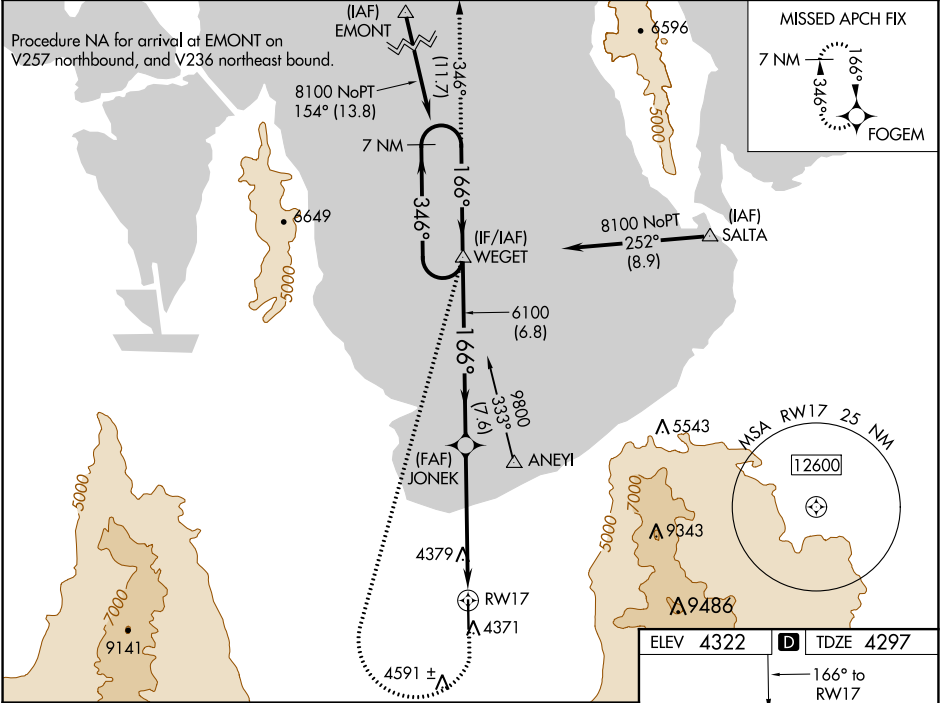
RNAV (GPS) RWY 17
BOLINDER FIELD-TOOELE VALLEY (TVY)

⚠ For uncompensated Baro-VNAV systems, LNAV/VNAV NA below -23°C (-9°F) or above 49°C (120°F). DME/DME RNP-0.3 NA. For inop ALS, increase LNAV/VNAV all Cats visibility to 7/5 SM, increase LNAV Cat C/D visibility to 1 SM.

MALSR

MISSED APPROACH: Climb to 4800 then climbing right turn to 8600 direct WEGET and track 346° to FOGEM and hold.

AWOS-3 119.725	SALT LAKE CITY APP CON 135.5 316.15	CLNC DEL 124.4	UNICOM 123.0 (CTAF) 0
--------------------------	---	--------------------------	---------------------------------



7 NM Holding Pattern

WEGET

8100 ← 346°

166° →

GP 3.00° TCH 55

6100

6100

6.8 NM

4.6 NM

1 NM

4800

8600

WEGET

tr 346°

FOGEM

JONEK

* LNAV only

* 1 NM to RW17

RW17

CATEGORY	A	B	C	D
LPV DA	4497-½		200 (200-½)	
LNAV/VNAV DA	4547-½		250 (300-½)	
LNAV MDA	4640-½ 343 (400-½)		4640-⅝ 343 (400-⅝)	
CIRCLING	4820-1 498 (500-1)	4900-1 578 (600-1)	5060-2 738 (800-2)	5380-3 1058 (1100-3)

ELEV 4322

TDZE 4297

166° to RW17

0.8% Up

6100 X 100

35

MIRL Rwy 17-35

REIL Rwy 35

SW-4, 03 DEC 2020 to 31 DEC 2020

SW-4, 03 DEC 2020 to 31 DEC 2020