

WAAS CH <b>90306</b> <b>W01A</b>	APP CRS <b>014°</b>	Rwy Idg TDZE Apt Elev	<b>6279</b> <b>1049</b> <b>1071</b>
--	------------------------	-----------------------------	---

RNAV (GPS) RWY 1

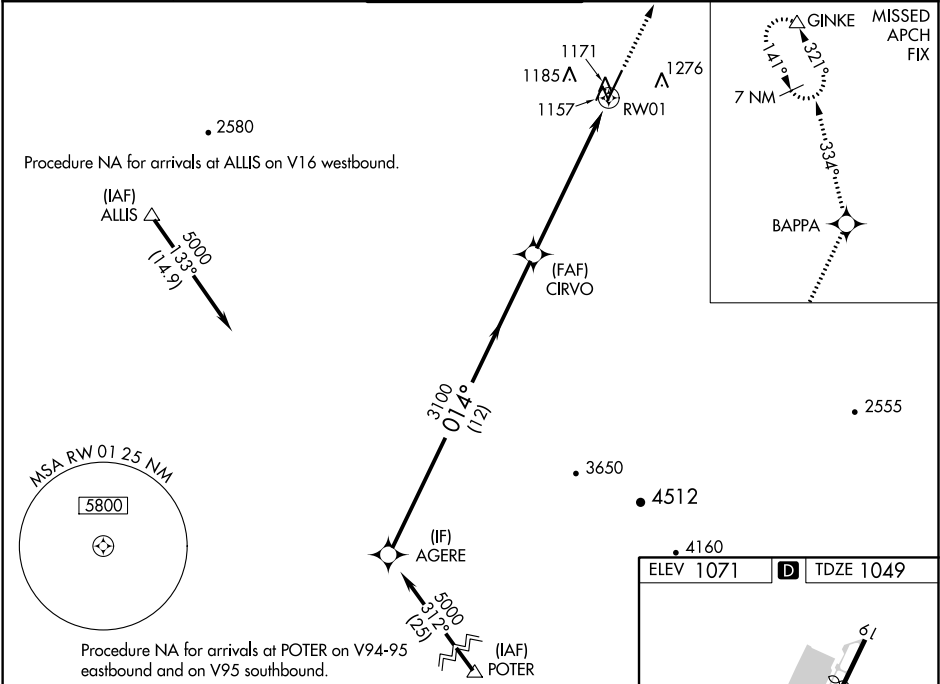
GLENDALE MUNI (GEU)

RNP APCH.

⚠ Baro-VNAV NA when using Phoenix Sky Harbor Intl altimeter setting. For uncompensated Baro-VNAV systems, LNAV/VNAV NA below -17°C or above 47°C. When local altimeter setting not received, use Phoenix Sky Harbor Intl altimeter setting; increase LPV DA to 1438 feet; increase LNAV/VNAV DA to 1517 feet and all visibilities ¼ SM; increase all MDA 60 feet and LNAV Cat C and D visibility ¼ SM. Night landing: Rwy 1, Cat C and D operational VGSI required, remain on or above VGSI glidepath until threshold. Rwy 1 helicopter visibility reduction below ¾ SM NA.

MISSED APPROACH: Climb to 10000 direct BAPPA and on 334° track to GINKE and hold, continue climb-in-hold to 10000.

ATIS <b>119.425</b>	LUKE APP CON ★ <b>118.15 363.125</b>	GLENDALE TOWER ★ <b>121.0 (CTAF) 0</b>	GND CON <b>118.0</b>	UNICOM <b>122.95</b>
------------------------	---	---	-------------------------	-------------------------



Procedure Turn NA		10000		BAPPA	GINKE
AGERE		↑		334° tr	△
5000		CIRVO		RWY 01	
GP 3.00° TCH 40		014°		3100	
		12 NM		6.2 NM	
CATEGORY	A	B	C	D	
LPV DA	1378-1¼		329 (400-1¼)		
LNAV/VNAV DA	1457-1½		408 (400-1½)		
LNAV MDA	1440-1	391 (400-1)	1440-1⅛	1440-1¼	
			391 (400-1⅛)	391 (400-1¼)	

