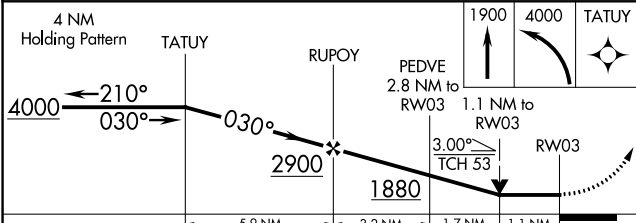
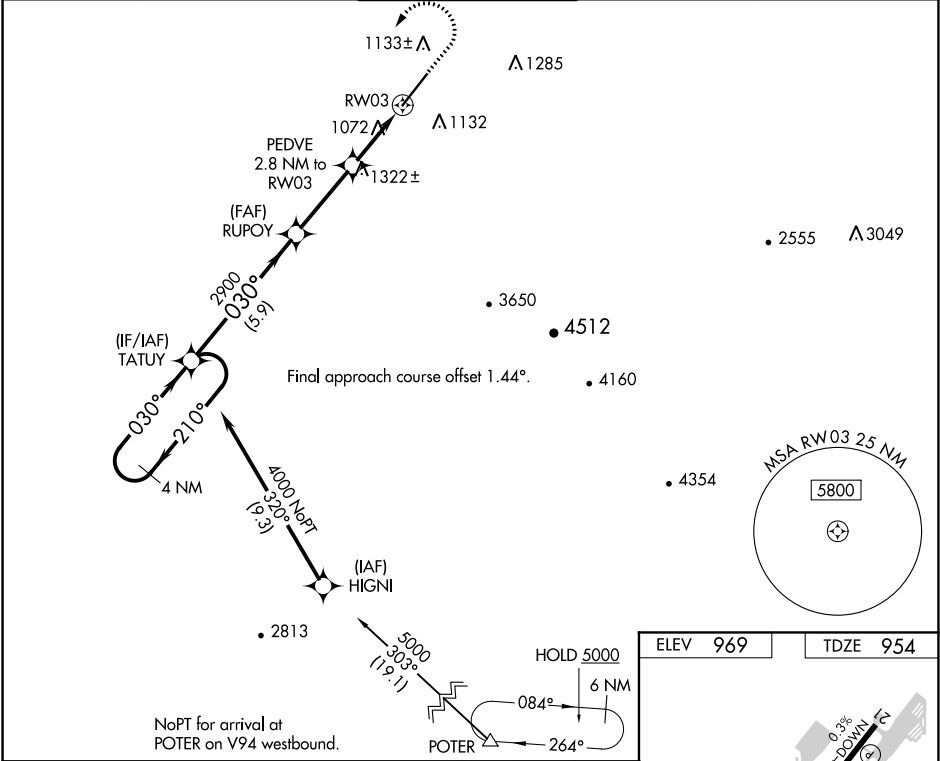


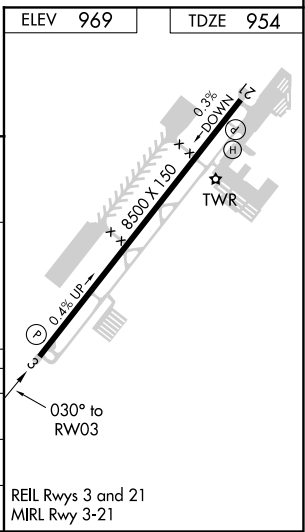
WAAS CH <b>42839</b> <b>W03A</b>	APP CRS <b>030°</b>	Rwy ldg <b>8500</b> TDZE <b>954</b> Apt Elev <b>969</b>
--	------------------------	---

**RNAV (GPS) RWY 3**  
PHOENIX GOODYEAR (GYR)

RNP APCH.		MISSED APPROACH: Climb to 1900 then climbing left turn to 4000 direct TATUY and hold.		
<div><div><div>▼</div><div>NA</div></div></div> <div>Procedure NA at night. Helicopter visibility reduction below ¾ SM NA. VDP NA when using Phoenix Sky Harbor Intl altimeter setting. When local altimeter setting not received, use Phoenix Sky Harbor Intl altimeter setting: increase all MDA 80 feet and visibility LP/LNAV Cat C/D and Circling Cat C ¼ SM.</div>				
ATIS 118.35	LUKE APP CON ★ 125.45 263.125	GOODYEAR TOWER ★ 120.1 (CTAF) 239.3	GND CON 121.7	UNICOM 122.95



CATEGORY	A	B	C	D
LP MDA	1340-1 386 (400-1)		1340-1½ 386 (400-1½)	
LNAV MDA	1580-1 626 (700-1)		1580-1¾ 626 (700-1¾)	
CIRCLING	1580-1 611 (700-1)		1860-2¾ 891 (900-2¾)	1920-3 951 (1000-3)



SW-4, 03 DEC 2020 to 31 DEC 2020

SW-4, 03 DEC 2020 to 31 DEC 2020