

SW-4, 03 DEC 2020 to 31 DEC 2020

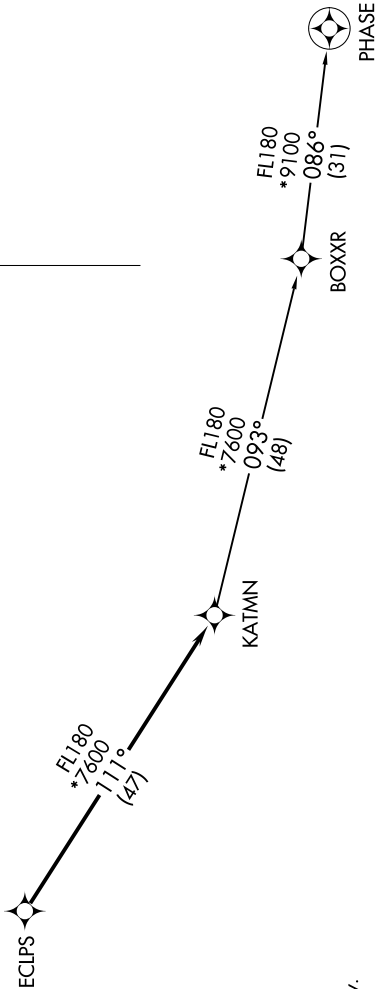
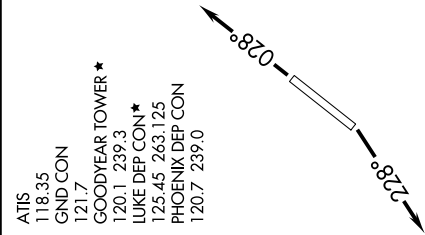
TOP ALTITUDE:
ASSIGNED BY ATC

- ATIS 118.35
- GND CON 121.7
- GOODYEAR TOWER ★ 120.1 239.3
- LUKE DEP CON ★ 125.45 263.125
- PHOENIX DEP CON 120.7 239.0

DEPARTURE ROUTE DESCRIPTION

TAKEOFF RUNWAY 3: Climb heading 028° or as assigned by ATC, thence. . . .
TAKEOFF RUNWAY 21: Climb heading 228° or as assigned by ATC, thence. . . .
. . . . on RADAR vectors to ECLPS, then on track 111° to KATMN, then on (transition). Maintain ATC assigned altitude, expect filed altitude 3 minutes after departure.

PHASE TRANSITION (KATMN6.PHASE)



TAKEOFF MINIMUMS
Rwys 3, 21: Standard.

- NOTE: RNAV 1.
- NOTE: Turbojets and turboprops only.
- NOTE: RADAR required.
- NOTE: GPS required.
- NOTE: Aircraft departing from KGEU and KGYR ATC assigned only.

NOTE: Chart not to scale.

SW-4, 03 DEC 2020 to 31 DEC 2020