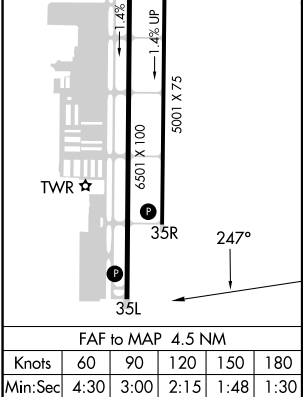
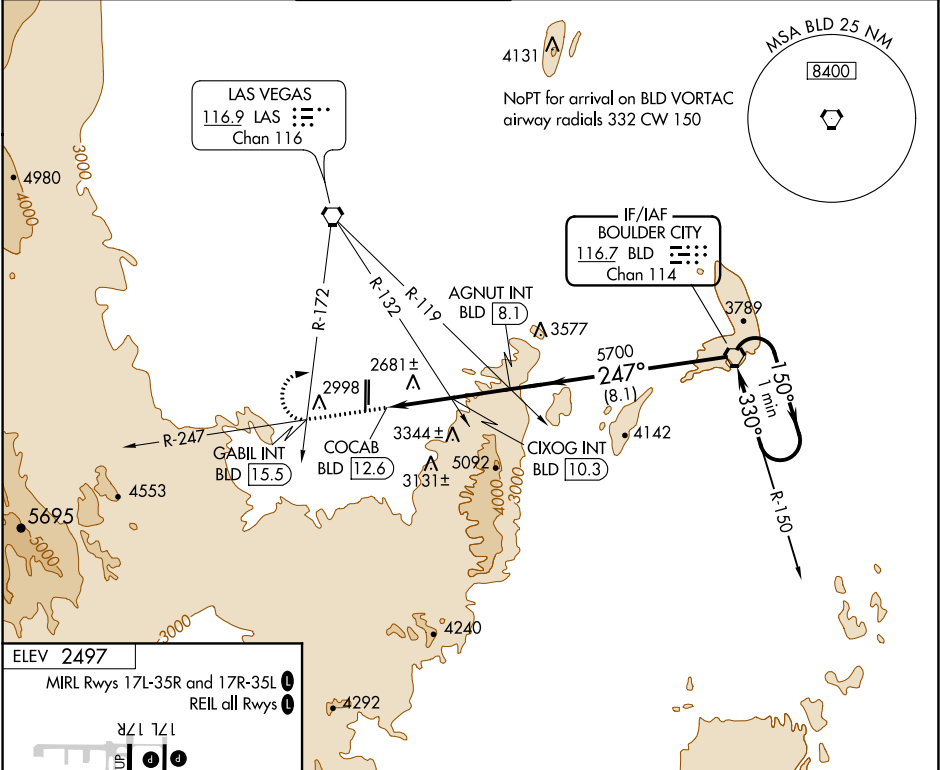


VORTAC BLD 116.7 Chan 114	APP CRS 247°	Rwy Idg TDZE Apt Elev 2497	N/A N/A 2497
---	------------------------	---	---------------------------

VOR-C
HENDERSON EXECUTIVE (HND)

<p>⚠ Circling to Rwy 35L NA at night. ⚠ If local altimeter setting not received, use McCarran Intl altimeter setting and increase all MDAs 60 feet.</p>	<p>MISSED APPROACH: Climb to 7000 on BLD VORTAC R-247 to GABIL INT/BLD 15.5 DME and right turn direct BLD VORTAC and hold.</p>
---	--

ATIS 120.775	LAS VEGAS APP CON 118.4 307.25	HENDERSON TOWER* 125.1 (CTAF) 0	GND CON 127.8	CLNC DEL 135.35	CLNC DEL 125.9 (when twr closed)	UNICOM 122.95
------------------------	--	--	-------------------------	---------------------------	---	-------------------------



7000 BLD R-247	GABIL INT	BLD	*4960 when using McCarran Intl altimeter setting.	BLD VORTAC	One Minute Holding Pattern
<p>AGNUT INT BLD [8.1]</p> <p>CIXOG INT BLD [10.3]</p> <p>COCAB BLD [12.6]</p> <p>4840*</p> <p>5700</p> <p>150°</p> <p>330°</p> <p>6000</p> <p>2.3 NM</p> <p>2.2 NM</p> <p>8.1 NM</p>					
CATEGORY	A	B	C	D	
CIRCLING	4840-1¼ 2343 (2400-1¼)	4840-1½ 2343 (2400-1½)	4840-3 2343 (2400-3)	NA	
CIXOG FIX MINIMUMS (DUAL VOR RECEIVERS OR DME REQUIRED)					
CIRCLING	3620-1¼ 1123 (1200-1¼)	3620-1½ 1123 (1200-1½)	3620-3 1123 (1200-3)	NA	