

LOC I-IVI
111.1

APP CRS
058°

Rwy Idg
TDZE
Apt Elev
5500
2402
2419

ILS or LOC RWY 6R
RYAN FIELD (RYN)

▼

▲ NA

Circling NA for Cat D north of Rwy 24R and east of Rwy 15.

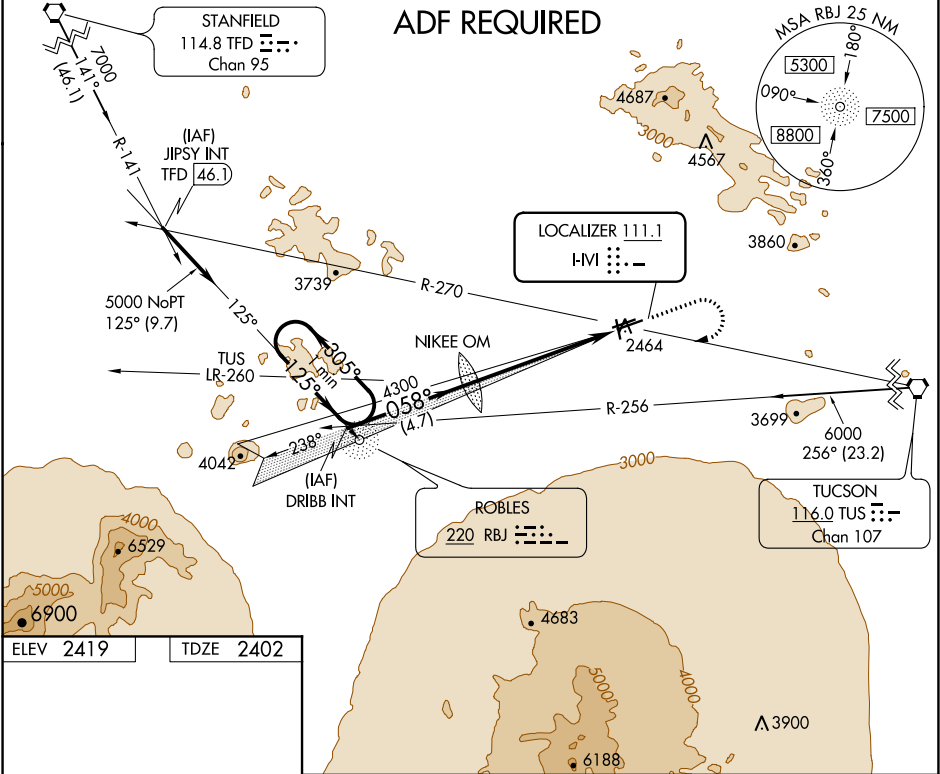
MISSED APPROACH: Climb to 3000, then climbing right turn to 5000 via direct RBJ NDB and 305° bearing RBJ to DRIBB INT and hold.

AWOS-3
133.35

TUCSON APP CON
128.5 273.6

RYAN TOWER ★
125.8 (CTAF) 0

GND CON
118.2



ELEV 2419 TDZE 2402

508° 5.6 NM from FAF

MIRL Rwy 6L-24R

REIL Rwy 6R and 6L

MIRL Rwy 6R-24L and 15-33

FAF to MAP 5.1 NM

Knots	60	90	120	150	180
Min:Sec	5:06	3:24	2:33	2:02	1:42

One Minute Holding Pattern

DRIBB INT

NIKEE OM

3000 5000 RBJ RBJ 305° DRIBB INT

5000 ← 305° 125° → 058° 4262 4300 058°

GS 3.00° TCH 50

4.7 NM 5.6 NM

CATEGORY	A	B	C	D
S-ILS 6R	2652-1 250 (300-1)			
S-LOC 6R	2900-1 498 (500-1)	2900-1¼ 498 (500-1¼)	2900-1½ 498 (500-1½)	
☑ CIRCLING	2960-1 541 (600-1)	3040-1¾ 621 (700-1¾)	3320-3 901 (1000-3)	