

VOR RWY 14
WINNEMUCCA MUNI (WMC)

MISSED APPROACH: Climbing right turn to 7800 on
INA VOR/DME R-326 to VICTR/INA 16.4 DME and hold.

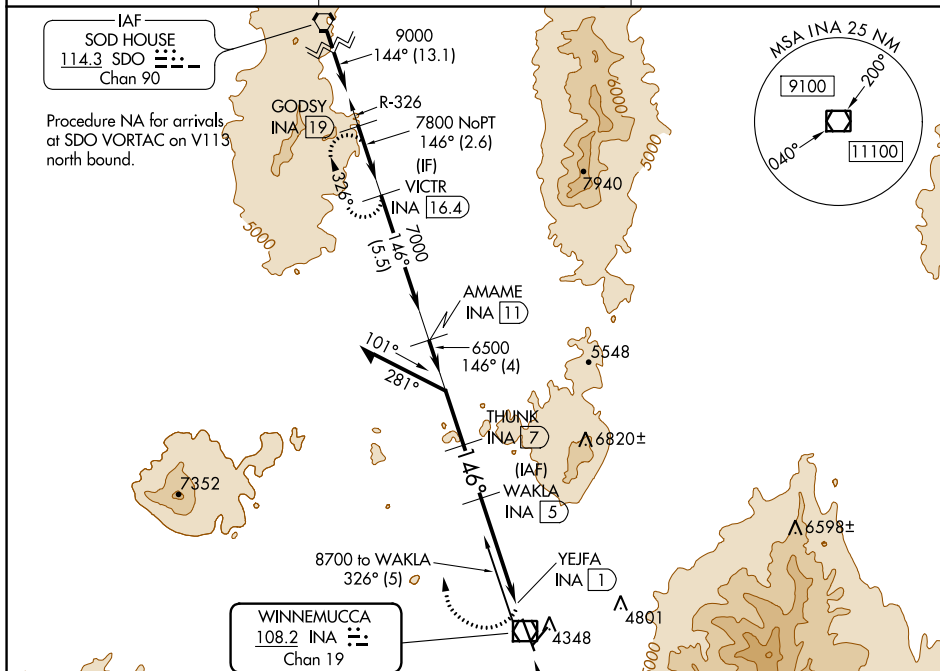
UN|COM
122.8 (CTAF) L

Diagram illustrating the proposed rail yard layout. The layout shows three main tracks: 14, 20, and 32. Track 14 is oriented at 146° 6.6 NM from FAF. The distance between tracks 14 and 20 is 700 x 100. The distance between tracks 20 and 32 is 400 x 75. The layout also includes a building, a star, and a circle with a cross. The diagram is labeled with "MIRL Rwy 2-20", "MIRL Rwy 14-32", and "REIL Rws 20, 14, and 32".

The diagram illustrates a flight path from an initial altitude of 8400 feet to a final altitude of 2200 feet. The path is divided into several segments with specific navigation points and distances.

Topographic Map: Shows a mountainous region with peaks at 4663m and 9396m. A flight path is indicated with a bearing of 326° and a distance of 10500 (24.61). Key locations include FESKO and INA (24.8).

Flight Path Details:

- Initial Altitude:** 8400
- Remain within 10 NM**
- WAKLA INA (5)**
- THUNK INA (7)**
- Angle:** 326°
- Angle:** 146°
- Altitude:** 6500
- Distance:** 3.08° TCH 40
- Altitude:** 5840
- INA (2.2)**
- YEJFA INA (1)**
- Distance:** 2.8 NM
- Distance:** 1.2 NM
- Distance:** 0.6

Table:

CATEGORY	A	B	C	D
S-14	4940-1	636 (700-1)	4940-1 ³ / ₄ 636 (700-1 ³ / ₄)	NA
C CIRCLING	4940-1	632 (700-1)	5280-3 972 (1000-3)	NA

SW-4, 03 DEC 2020 to 31 DEC 2020

SV-4, 03 DEC 2020 to 31 DEC 2020