

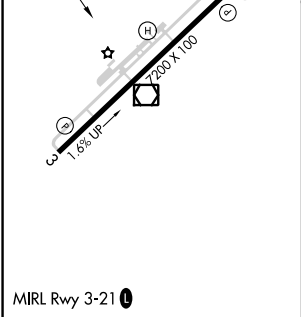
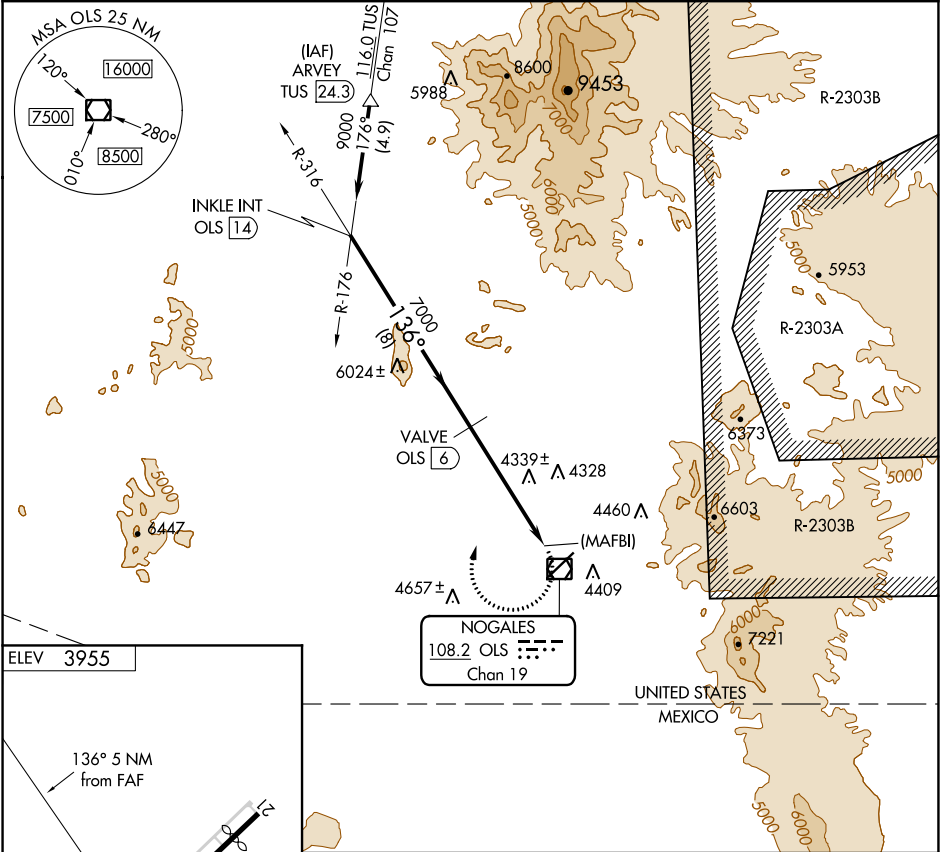
VOR/DME OLS	APP CRS	Rwy Idg	N/A
108.2	136°	TDZE	N/A
Chan 19		Apt Elev	3955

VOR/DME or GPS-B

NOGALES INTL (OLS)

<div><div>▼</div><div>▲ NA</div></div>	Night landing Rwy 21 NA. Helicopter visibility reduction below 1 SM not authorized. When local altimeter setting not received, procedure NA.	MISSED APPROACH: Climbing right turn to 7600 via OLS R-316 then climbing left turn to 10000 direct OLS VOR/DME.
--	--	---

ASOS 121.125	TUCSON APP CON 118.75 269.55	UNICOM 122.8 (CTAF) <b>①</b>
-----------------	---------------------------------	---------------------------------



INKLE INT OLS 14		VALVE OLS 6	7600	10000	OLS
9000		7000	OLS R-316		①
Procedure Turn NA			(MAFBI) OLS 1		
8 NM		5 NM			
CATEGORY	A	B	C	D	
CIRCLING	5200-1¼ 1245 (1300-1¼)	5200-1½ 1245 (1300-1½)	5200-3	1245 (1300-3)	